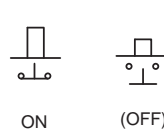
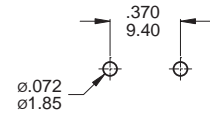


Part No. Shown : DS-001



SCHMATIC



P.C. MOUNTING

SPECIFICATIONS

- CONTACT RATING :** 0.5A 120VAC
- MECHANICAL LIFE :** 100,000 make-and-break cycles
- CONTACT RESISTANCE :** 200milliohms maximum
- INSULATION RESISTANCE :** 100megohms minimum
- DIELECTRIC STRENGTH :** 1,000 V RMS@sea level.
- ACTUATION FORCE :** 200±50 grams
- ACTUATION TRAVEL :** 5.50±0.25 mm

MATERIALS

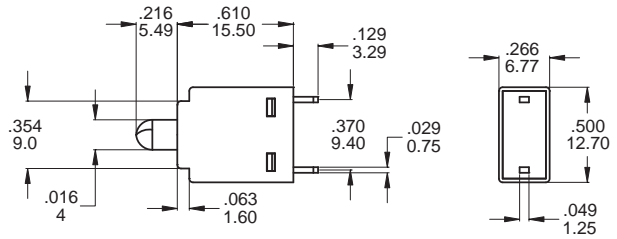
- CASE & BUSHING :** Glass filled nylon 66 or 46 (UL94V-0)
- PLUNGER :** Glass filled nylon 66 (UL94V-0)
- CONTACT & TERMINALS :** Copper alloy,with silver or gold plated.

WAVE SOLDERING :

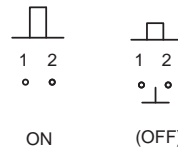
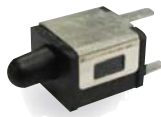
- Recommended Soldering Temperature 260°C±5°C
- Duration of Solder Immersion : 5 seconds max.(PCB is 1.6mm)



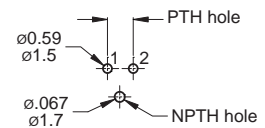
DS Pushbutton Switches



Part No. Shown : DS-003



SCHMATIC



P.C. MOUNTING

SPECIFICATIONS

- CONTACT RATING :** 0.5A 120VAC
- MECHANICAL LIFE :** 100,000 make-and-break cycles
- CONTACT RESISTANCE :** 200milliohms maximum
- INSULATION RESISTANCE :** 100megohms minimum
- DIELECTRIC STRENGTH :** 500 V RMS@sea level.
- ACTUATION FORCE :** 200±50 grams
- ACTUATION OVERTRAVEL :** 4.20±0.25 mm

- PT=PRETRAVEL :** 0.50+/-0.30mm
- OP=OPERATION POSITION :** 11.70+/-0.30mm

MATERIALS

- CASE:** Glass filled FR52 for RoHs (UL94V-0)
- HOUSING:** SUS301,tin plated.
- PLUNGER :** Glass filled PBT for RoHs (UL94V-0)
- CONTACT :** PBS.
- TERMINALS :** Brass,silver plated.

WAVE SOLDERING :

- Recommended Soldering Temperature 260°C±5°C
- Duration of Solder Immersion : 5 seconds max.(PCB is 1.6mm)

