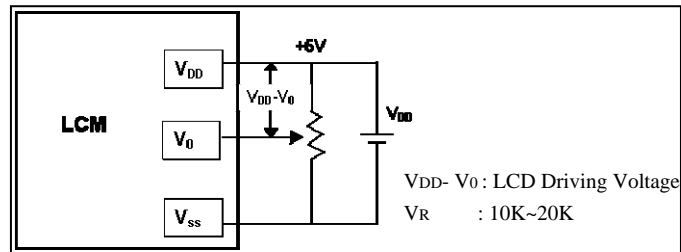
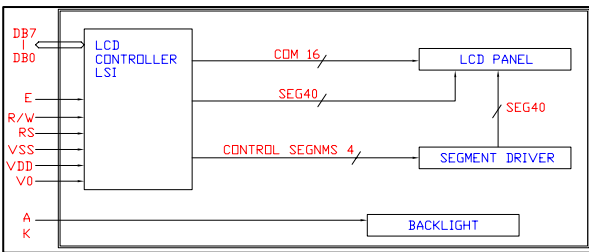


DOTS SIZE



Interface		
Pin no	Symbol	Function
1	VSS	Power supply (GND)
2	VDD	Power supply(+)
3	VO	Contrast Adjustment
4	RS	Data / Instruction select
5	R/W	Read / Write select
6	E	Enable signal
7	DB0	Date bus line
8	DB1	Date bus line
9	DB2	Date bus line
10	DB3	Date bus line
11	DB4	Date bus line
12	DB5	Date bus line
13	DB6	Date bus line
14	DB7	Date bus line
15	LEDA	LED B/L (+)
16	LEDK	LED B/L (-)

Feature			
Controller	S6A0069	Module	80.0 x 36.0
Duty	1/16 duty	Viewing Area	65.0 x 17.9
Bias	1/5 bias	Mounting hole	75.0 x 31.0
B/L	Y/G	Character Size	2.492 x 4.618

Absolute Maximum Rating					
I tem	Symbol	Condition	Min	Max	Units
Supply for logic voltage	V <sub>dd</sub> -V <sub>ss</sub>	25°c	-0.3	7	V
LCD driving supply voltage	V <sub>dd</sub> -V <sub>ss</sub>	25°c	-0.3	13	V
Input voltage	V <sub>in</sub>	25°c	-0.3	V <sub>dd</sub> +0.3	V

Electrical Characteristics						
Item	Symbol	Condition	Min.	Typ.	Max.	Units
Power supply voltage	V <sub>dd</sub> -V <sub>ss</sub>	25°c	4.5	-	5.5	V
LCD operation voltage	V <sub>op</sub>	25°c	-	4.5	-	V
LED Forward Voltage	V <sub>F</sub>	25°c	-	4.2	-	V
LED Forward Current	I <sub>F</sub>	25°c	-	120	-	mA