



SPECIFICATIONS

RATING : 1th 5A/250VAC resistive load 3A/250VAC
CONTACT RESISTANCE : 50 mΩ max. @ 1A 12VDC (initial value)
INSULATION RESISTANCE : 1,000 MΩ min. at 500VDC
DIELECTRIC STRENGTH : 2,000V RMS @ sea level
OPERATION TEMPERATURE : -20°C to 55°C
MECHANICAL LIFE : Momentary 1,000,000 cycles
 Self-lock 500,000 cycles
ELECTRICAL LIFE : 50,000 make-and-break cycles at full load
TORQUE : 5~14Nm
PANEL THICKNESS : 10mm (Ø25.20mm)
OPERATION PRESSURE : 1Pole 2.5±1N / 2Poles 3.5±1N
TRAVEL : About 3.2mm
INGRESS PROTECTION : IP67, IK08(Stainless)

MATERIALS

BUSHING : Stainless Steel / Aluminum alloy
BASE : PBT(UL 94-V0) , PC(UL 94-V2)
ACTUATOR : PC; Stainless Steel / Aluminum alloy
INNER ASSEMBLY : POM / PA66.
SPRING : Spring steel.
SEALING : Silicone.
O-Ring : Silicone.
TERMINAL : Brass,with silver or gold plated.
CONTACT :
 Q=Copper ,Silver plated.
 R=Brass,Coin silver,Gold plated
HEX NUT : Nickel plated brass

HOW TO ORDER

IP 67
 ACCORDING TO
 EN 60529:1991+A1:2001
 IEC 60529:2001

UL US
 E 187490

RoHS
 compliant

Pb
 lead-free

MODEL NO.	BODY TYPE	BUTTON TYPE	CONTACT CONFIGURATION	OPERATING TYPE	LIGHT TYPE	LED COLOR	LED VOLTAGE	TERMINAL SHAPE	TERMINAL PLATING																																												
MPB25	<p>Body type</p> <p>A0 Stainless (Natural) C3 Al alloy (Black Anodized)</p>	<p>Button type</p> <p>F Flat</p>	<p>Contact Configuration</p> <p>1 1NO 1NC 2 2NO 2NC</p>	<p>Operating type</p> <p>0 Momentary 1 Lock</p>	<p>Light type</p> <p>E Ring (Moveable) E2 Illuminated Ring with led color ,red/green/blue availavle only</p>			<p>Terminal shape</p> <p>J Solder terminal(std) T1 Flying lead terminals L=500mm T2 Flying lead terminals L=1000mm T3 Flying lead terminals L=1500mm T4 Flying lead terminals L=2000mm</p>	<p>Terminal plating</p> <p>Q Silver R Gold</p>																																												
MPB25	<p>Body type</p> <p>D0 Stainless (Natural),Flat</p>	<p>Button type</p> <p>F Flat</p>	<p>Contact Configuration</p> <p>1 1NO 1NC 2 2NO 2NC</p>	<p>Operating type</p> <p>0 Momentary 1 Lock</p>	<p>Light type</p> <p>E1 Illuminated ring with power logo only availavle in white cap E3 Illuminated ring with power logo with led color,red/green/blue availavle only</p>	<p>LED Color</p> <table border="1"> <thead> <tr> <th>ITEM NO</th> <th>COLOR</th> </tr> </thead> <tbody> <tr><td>0</td><td>Without LED</td></tr> <tr><td>1</td><td>White</td></tr> <tr><td>3</td><td>Red</td></tr> <tr><td>5</td><td>Yellow</td></tr> <tr><td>6</td><td>Green</td></tr> <tr><td>7</td><td>Blue</td></tr> </tbody> </table> <p>DUAL COLOR LED</p> <table border="1"> <tbody> <tr><td>A</td><td>Red&Green</td></tr> <tr><td>B</td><td>Red&Blue</td></tr> <tr><td>D</td><td>Blue&Yellow</td></tr> <tr><td>G</td><td>Red&Yellow</td></tr> <tr><td>H</td><td>Green&Yellow</td></tr> <tr><td>J</td><td>Orange&Green</td></tr> </tbody> </table>	ITEM NO	COLOR	0	Without LED	1	White	3	Red	5	Yellow	6	Green	7	Blue	A	Red&Green	B	Red&Blue	D	Blue&Yellow	G	Red&Yellow	H	Green&Yellow	J	Orange&Green	<p>LED Voltage (20mA)</p> <table border="1"> <thead> <tr> <th>ITEM NO</th> <th>VOLTAGE</th> </tr> </thead> <tbody> <tr><td>0</td><td>Without Resistor</td></tr> <tr><td>3</td><td>3V</td></tr> <tr><td>6</td><td>6V</td></tr> <tr><td>12</td><td>12V</td></tr> <tr><td>24</td><td>24V</td></tr> <tr><td>36</td><td>36V</td></tr> <tr><td>110</td><td>110V</td></tr> <tr><td>220</td><td>220V</td></tr> </tbody> </table>	ITEM NO	VOLTAGE	0	Without Resistor	3	3V	6	6V	12	12V	24	24V	36	36V	110	110V	220	220V		
ITEM NO	COLOR																																																				
0	Without LED																																																				
1	White																																																				
3	Red																																																				
5	Yellow																																																				
6	Green																																																				
7	Blue																																																				
A	Red&Green																																																				
B	Red&Blue																																																				
D	Blue&Yellow																																																				
G	Red&Yellow																																																				
H	Green&Yellow																																																				
J	Orange&Green																																																				
ITEM NO	VOLTAGE																																																				
0	Without Resistor																																																				
3	3V																																																				
6	6V																																																				
12	12V																																																				
24	24V																																																				
36	36V																																																				
110	110V																																																				
220	220V																																																				

EXAMPLE:
 MPB25-A0F10E-JQ (Without LED)
 MPB25-A0F10E-□-□-□-□-□-□-□-□
 LED color LED voltage



MPB25 Series

25mm Metal Pushbutton Switches

CIRCUIT

POSITION 1

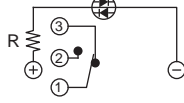


POSITION 2

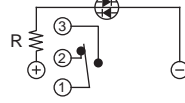


Without LED (1 Pole)

POSITION 1

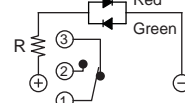


POSITION 2

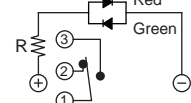


Single Color Led (1 Pole)

POSITION 1

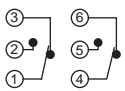


POSITION 2

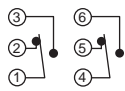


Dual Color Led (1 Pole)

POSITION 1

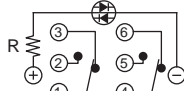


POSITION 2

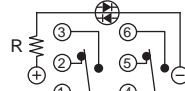


Without LED (2 Poles)

POSITION 1

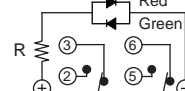


POSITION 2

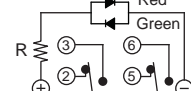


Single Color Led (2 Poles)

POSITION 1



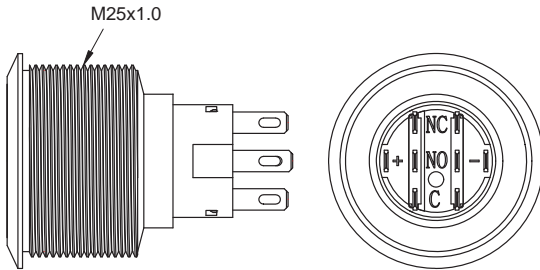
POSITION 2



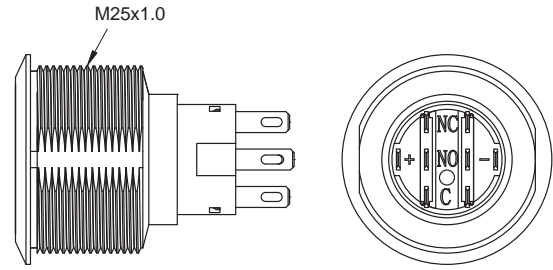
Dual Color Led (2 Poles)

BODY TYPE

A0/C3 Body

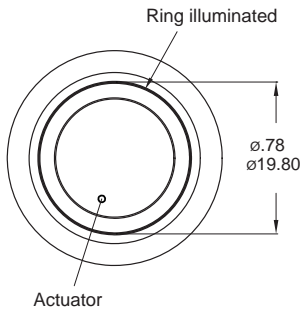


D0 Body (Flat)

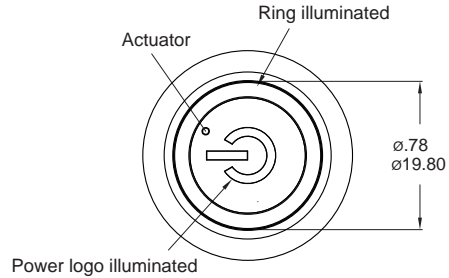


LIGHT TYPE

E Ring (Moveable)



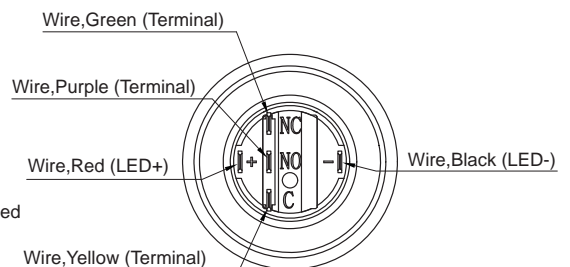
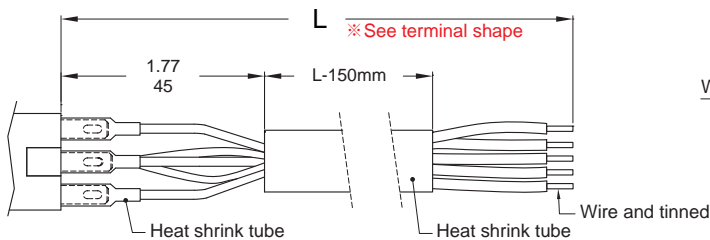
E3 Ring+Power logo



* Only for D0 body type.

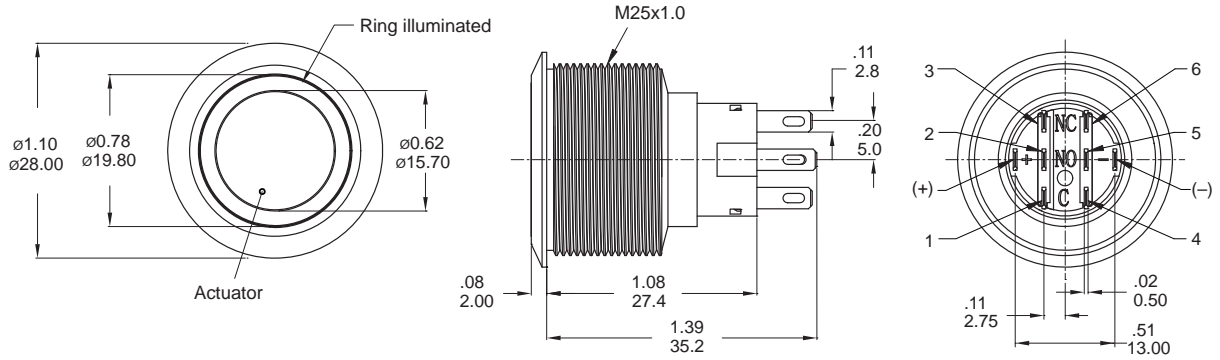
Wire (Flying lead Terminals)

※ Wire=UL 3385,18AWG,300V(Black/Yellow/Green/Red/Purple)



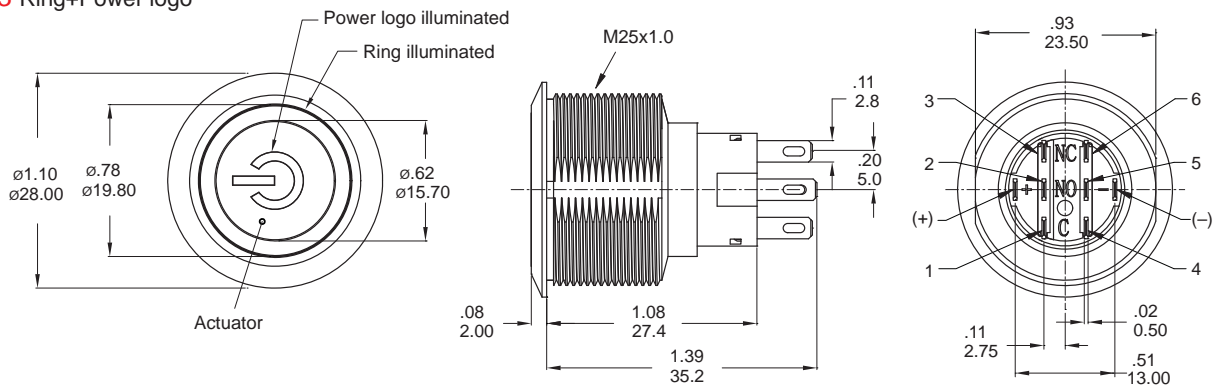
LIGHT TYPE

E Ring (Moveable)



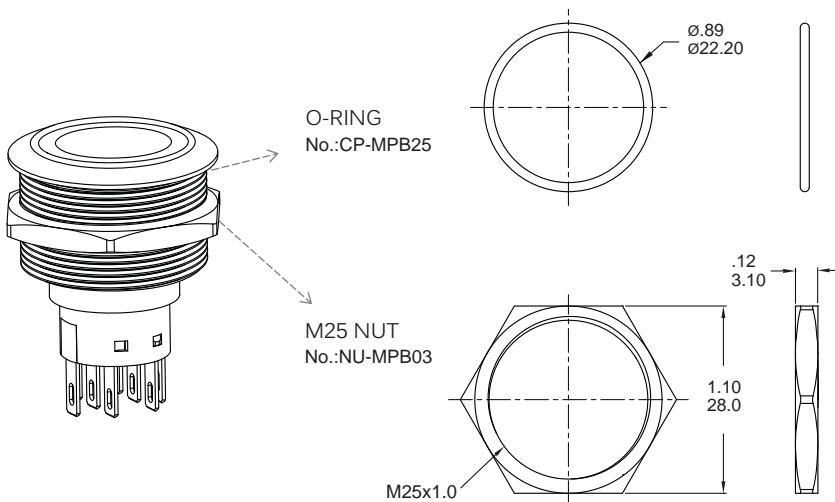
Part No. Shown : MPB25-A0F2□E-□□-JQ

E3 Ring+Power logo



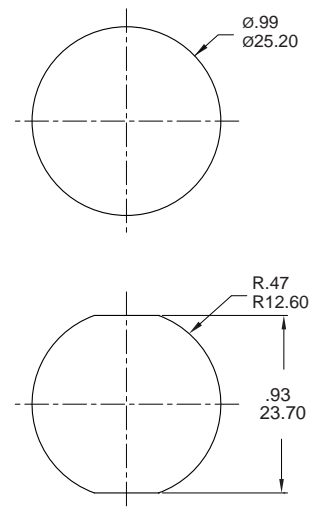
Part No. Shown : MPB25-D0F2□E3-□□-JQ

ASSEMBLED VIEW



PANEL MOUNTING

Max. Panel thickness: 10.0mm [.39]



O-RING INSTALLATION

Proposal	In front of the panel	Behind the panel
Installation Diagram		

