

# SPL15 Series

Pushbutton Switches



## General Specifications

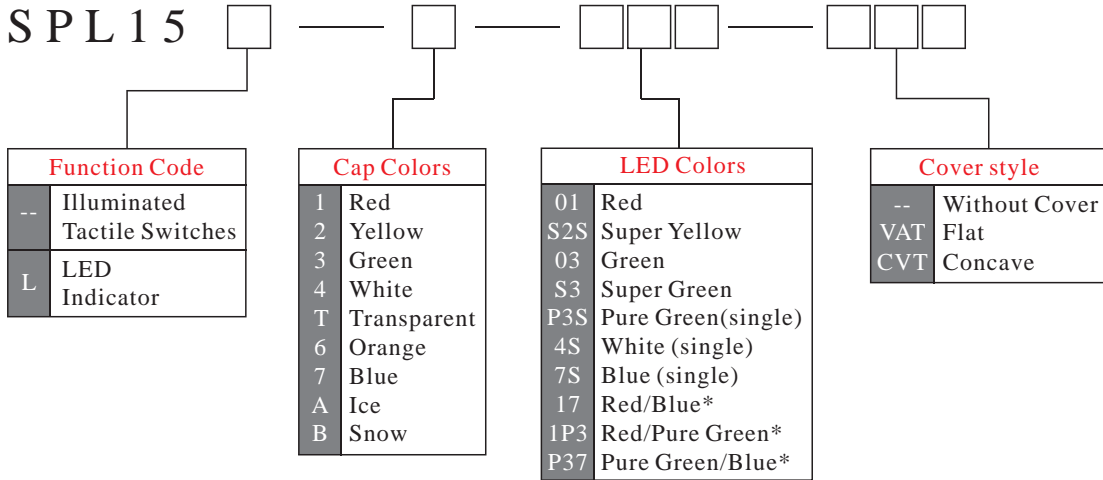
Circuit	:SPST
Current Rating	:50mA @ 12VDC
Contact Resistance	:100mOhm Max.(initial)
Insulation Resistance	:100MOhm Min.
Operating Force	:300gf ± 50gf
Total Travel	:0.3mm ± 0.1mm
Operating Life	:5,000,000 cycles Min.
Operating Temperature	:-25 deg.~+60 deg.
Solder Specifications	:260 deg. for 3 seconds

## Materials

Cover	:Polycarbonate (PC)
Cap	:Polycarbonate (PC) or Acrylonitrile Butadine Styrene(ABS)
Reflector	:Polycarbonate (PC)
Base	:Polyamide (PA)
Lamp Term.	:Phosphor bronze (PBS) with gold plating
Act. Dome	:Phosphor bronze (PBS) with silver plating
End Term.	:Brass with gold plating

## HOW TO ORDER

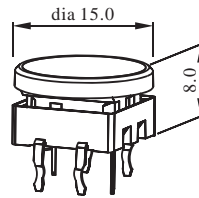
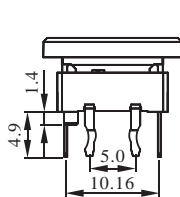
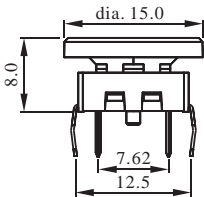
SPL15



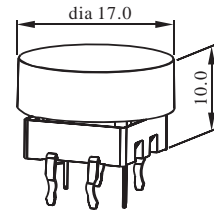
EXAMPLE : SPL15-1-01-VAT  
Illuminated tact switch -Red cap-Red led-Transparent VAT cover.

\*" not standard type  
please inquire first

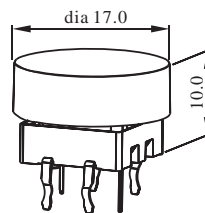
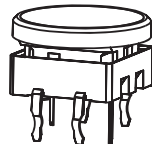
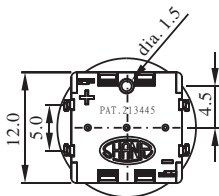
## DIMENSION



Standard switch unit



Switch with VAT cover

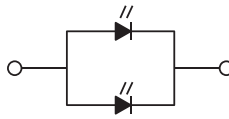


Switch with CVT cover

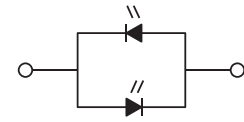
**CONFIGURATION**



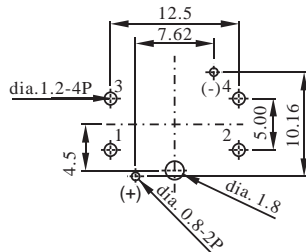
Single chip LED



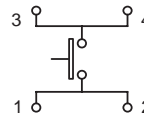
Single Color / 2chips led



Dual Colors LED



P.C.B. Mounting Holes



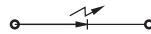
(SPST)  
Contact Configuration

**LED CHARACTERISTICS**

The electrical specifications shown are determined at a basic temperature of 25 C. If the source voltage exceeds the rated voltage of LED, a ballast resistor must be connected in series with the LED.



Attention: LED are electrostatic sensitive devices



Single color	Forward Voltage $V_f$ (V) at 20mA	Forward Current $I_f$ (mA)	Reverse Voltage $V_R$ (V)	Reverse Current $I_R$ (uA) at $V_R=5V$
bi-Red	1.8~2.6	Typical 20mA 30 mA max.	5V	100uA max.
Super Yellow	2.0~2.5			
Green	2.2~2.6			
Super Green	2.0~2.6			
Pure Green	3.2~3.6			
Blue	3.5~4.0			
White	3.2~3.8			
Bicolor LED				
Red & Blue	Red 1.8~2.6 Blue 3.5~4.0	Typical 20mA 30 mA max.	5V	100uA max.
Red & Pure Green	Red 1.8~2.6 Pure Green 3.2~3.6			
Pure Green & Blue	Pure Green 3.2~3.6 Blue 3.5~4.0			

- Notes:**
- 1.LED circuit is isolated and requires external power source.
  - 2.LED an integral part of the switch.
  - 3.Emitting color:±20%
  - 4.Forward Voltage:±0.1V
  - 5..Liminous intensity / Luminous Flux:±20%

**SPL15**  
Pushbutton Switches