

SPECIFICATIONS

CONTACT: Stainless Steel

RATING: 50mA , 5VDC

STROKE: 2mm

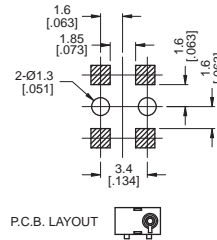
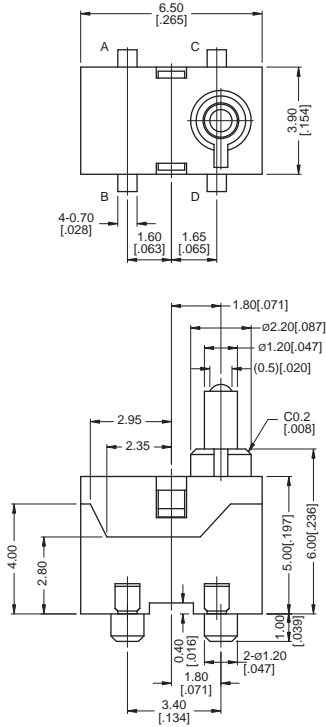
OPERATING FORCE: 30gf max

CONTACT RESISTANCE: 500mΩ max.

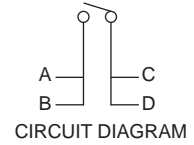
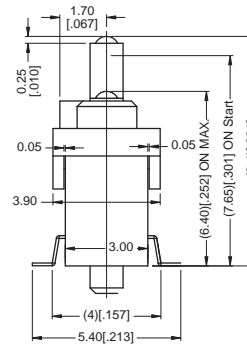
MODEL OPTIONS



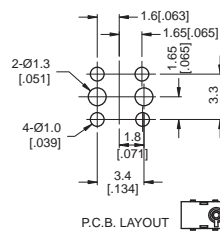
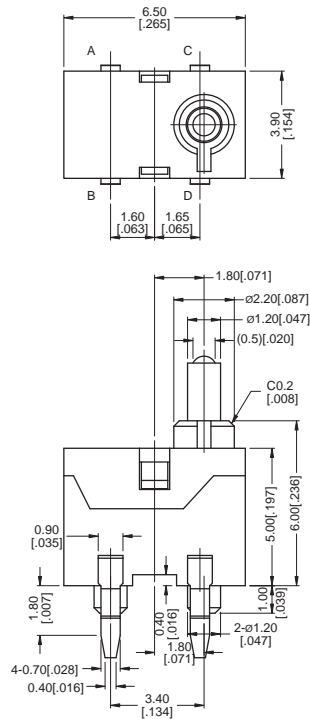
TE-M



NOTE:
1. ALL DIMENSIONS ARE IN MILLIMETERS,
[] DIMENSIONS ARE IN INCHS.
2. GENERAL TOLERANCE: ±0.2 mm



TE-H



NOTE:
1. ALL DIMENSIONS ARE IN MILLIMETERS,
[] DIMENSIONS ARE IN INCHS.
2. GENERAL TOLERANCE: ±0.2 mm

