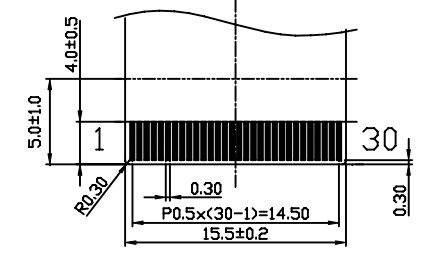
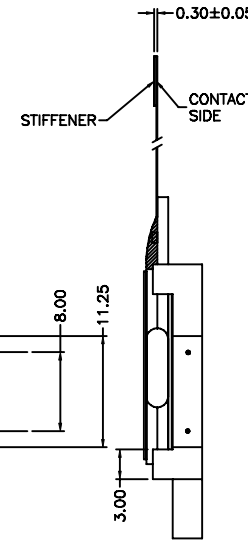
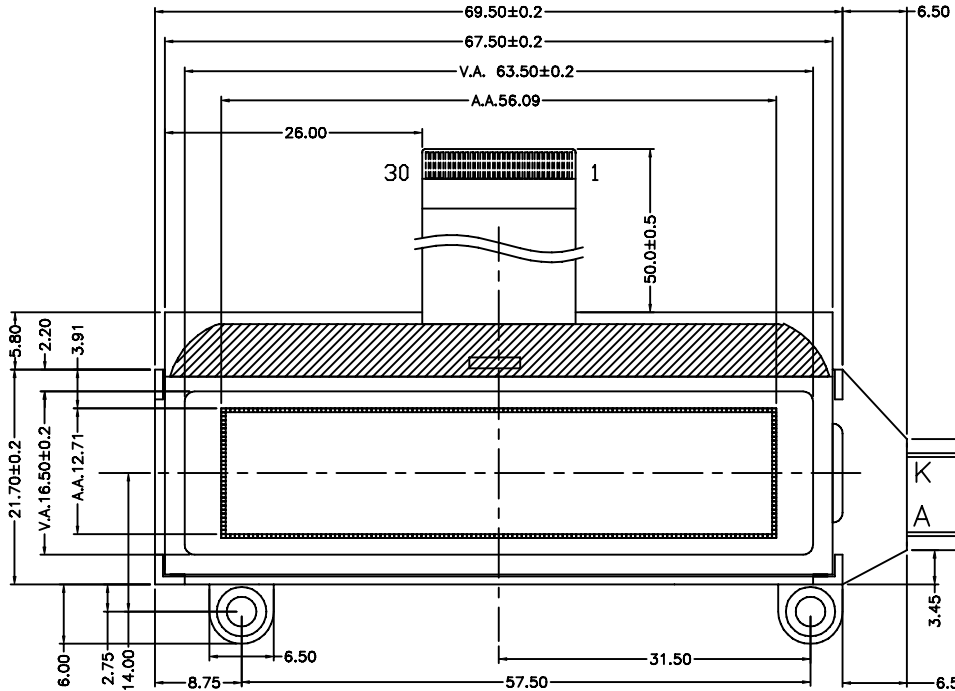
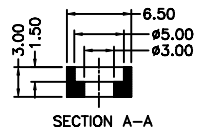
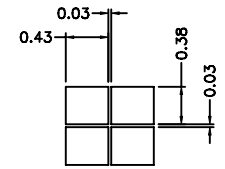


REV	Description	Date
A00	First Issue	2008-MAY-08

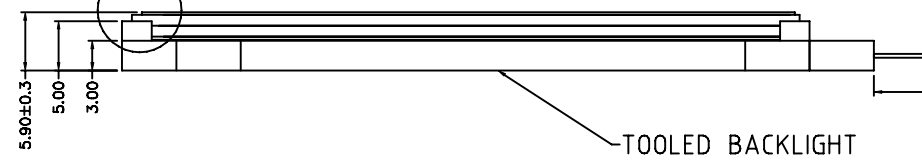


FPC CONTACT SIDE



DOT DETAILS

DETAIL B



TOOLED BACKLIGHT

STRIPPED & TINNED

SPECIFICATIONS:

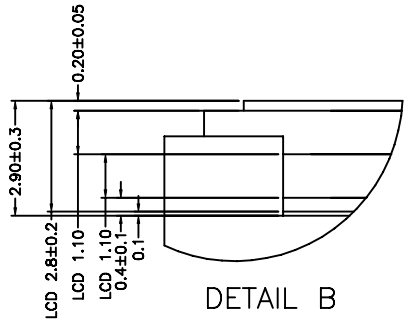
- 1) STN/-VE/BLUE/TRANSMISSIVE MODE
- 2) 1/33 DUTY, 1/6 BIAS, VOP=8.0V
- 3) VIEWING ANGLE = 6 O'CLOCK
- 4) OP.TEMP.= 0°C TO +50°C  
ST.TEMP.= -10°C TO +60°C
- 5) LOGIC VOLTAGE, VDD=3.3V
- 6) WITH WHITE LED BACKLIGHT, 3.3V@20mA
- 7) DRIVE IC: UC1601, VDD=3.3V

COG Pin Assignment:

1	2	3	4	5	6	7	8	9	10
VLCD_IN	VLCD_IN	VLCD_OUT	VLCD_OUT	VB0+	VB0-	VB1-	VB1+	VSS2	VSS
11	12	13	14	15	16	17	18	19	20
VDD3	VDD2	VDD	BM1	BM0	D7	D6	D5	D4	D3
21	22	23	24	25	26	27	28	29	30
D2	D1	D0	WR1	WR0	CD	RST	CS0	NC	NC

Backlight Pin Assignment

A	K
Anode	Cathode



DETAIL B

Description: **MECHANICAL SPECIFICATIONS**

Scale: \_\_\_\_\_

Sheet : 1 of 1

Unspecified Tol. 0.03 Unit mm

Approvals \_\_\_\_\_ Date \_\_\_\_\_

Draw: \_\_\_\_\_

Check: \_\_\_\_\_

Approve: \_\_\_\_\_

**TRI-T COMPANY LIMITED**

Project Number: **TMGG12232A-05**

Item Number: \_\_\_\_\_

Do Not Scale This Drawing

Projection: