

# TZ Series

Piezo switches (Pulse)



## SPECIFICATIONS

**RATING :** 5-24VADC/1A PULSE MODE.

**OPERATING LIFE :** 50 MILLION CYCLE MIN.

**CONTACT RESISTANCE :** 1Ω MAX.

**OPERATING TEMPERATURE:** -20°C to 65°C.

## MATERIALS

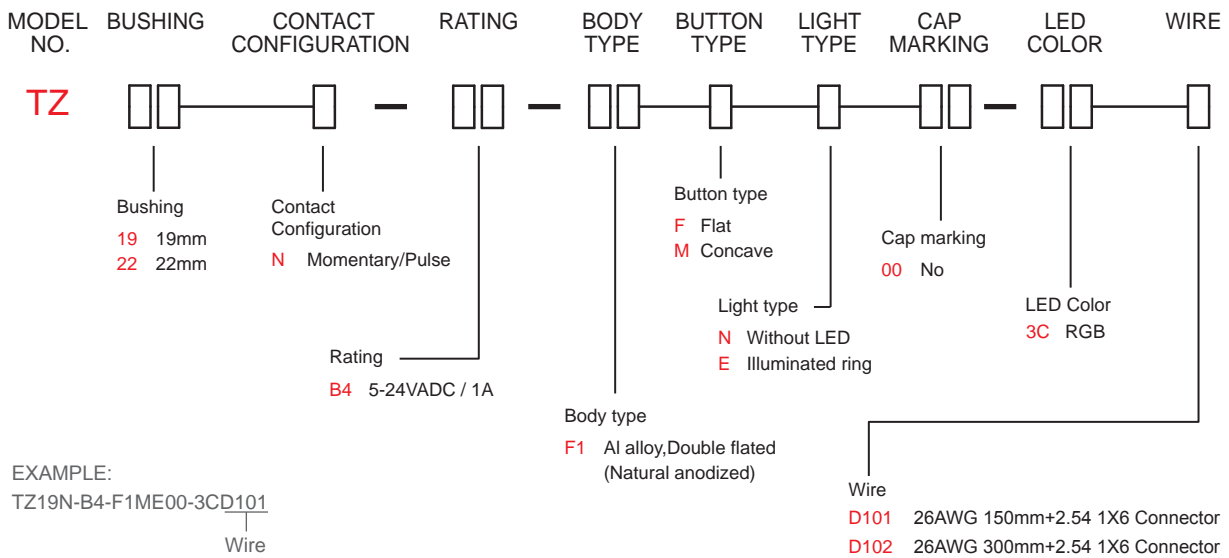
**BUSHING:** Aluminum alloy.

**SEALING :** Silicone,EPOXY.

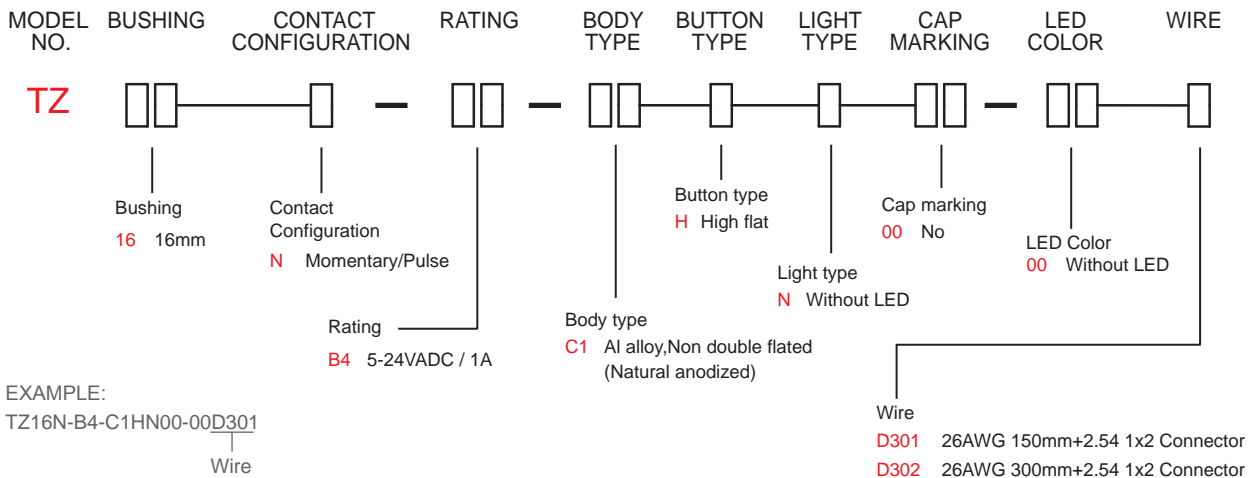
**HEX NUT :** Nickel plated brass.



## HOW TO ORDER



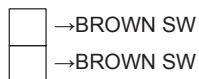
## TZ16 HOW TO ORDER



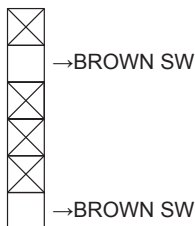
## CIRCUIT

### 00 Without led application diagram

Available with 16mm Bushing only

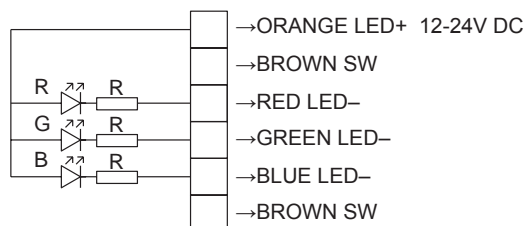


Available with 19mm/22mm Bushing only



### 3C Color led application diagram

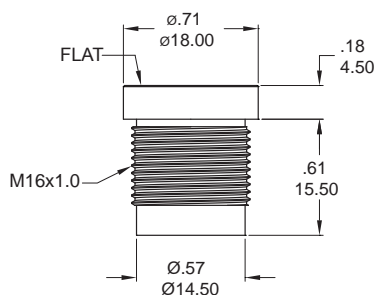
Available with 19mm/22mm Bushing only



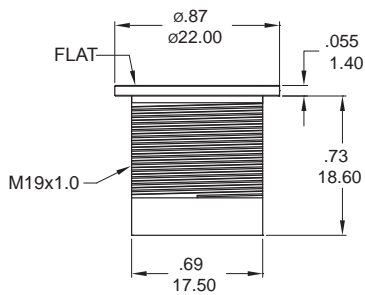
## BUSHING

### F Flat button type

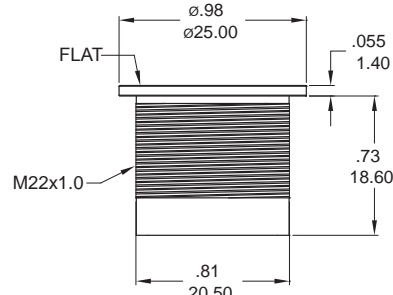
#### 16mm Bushing



#### 19mm Bushing

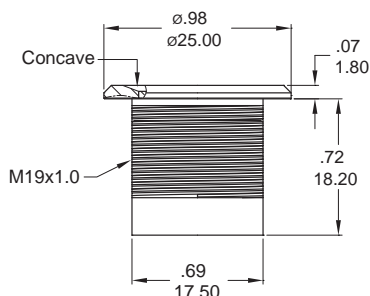


#### 22mm Bushing

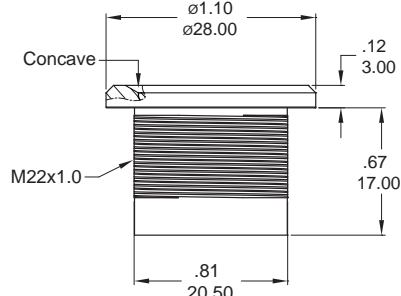


### M Concave button type

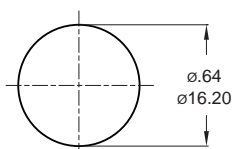
#### 19mm Bushing



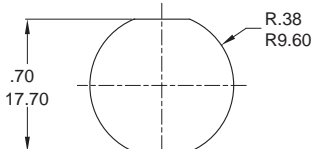
#### 22mm Bushing



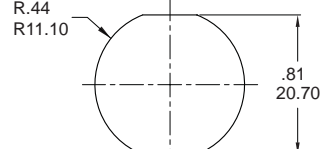
## PANEL CUTOUT



Available with 16mm Bushing only  
Max. Panel thickness: 8.0mm [315] (Max.)



Available with 19mm Bushing only  
Max. Panel thickness: 10.0mm [394]



Available with 22mm Bushing only  
Max. Panel thickness: 10.0mm [394]

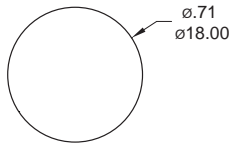


# TZ Series

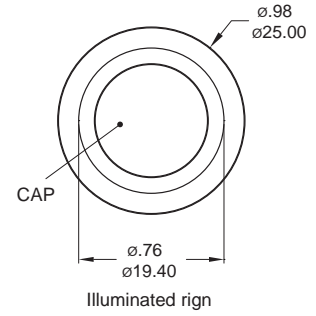
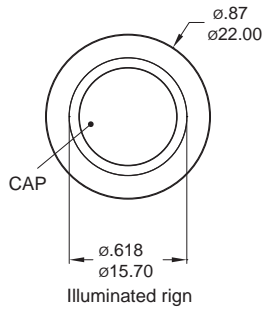
Piezo switches (Pulse)

## LIGHT TYPE

**F** Flat button type (Without led)

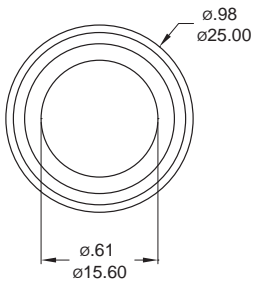


**F** Flat button type (Illuminated ring)

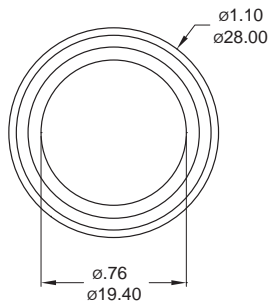


**M** Concave button type (Without led)

19mm Bushing

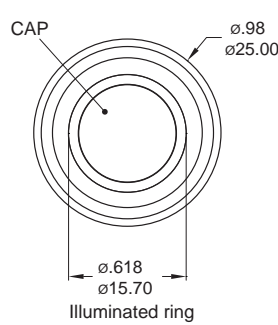


22mm Bushing

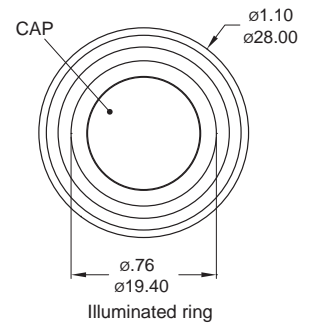


**M** Concave button type (Illuminated ring)

19mm Bushing



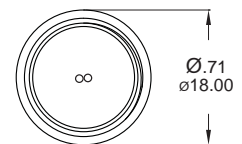
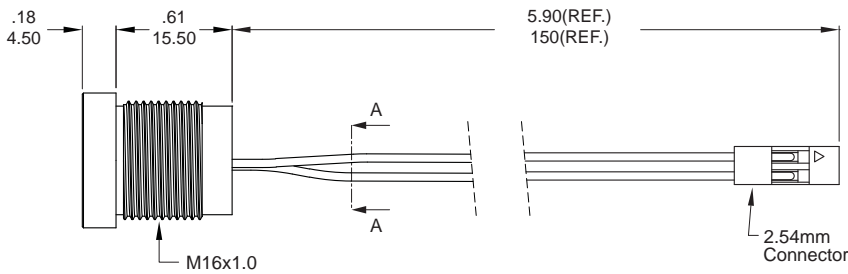
22mm Bushing



TZ Piezo switches

## WIRE

**F** Flat, Without led

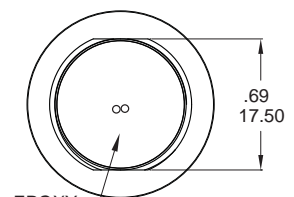
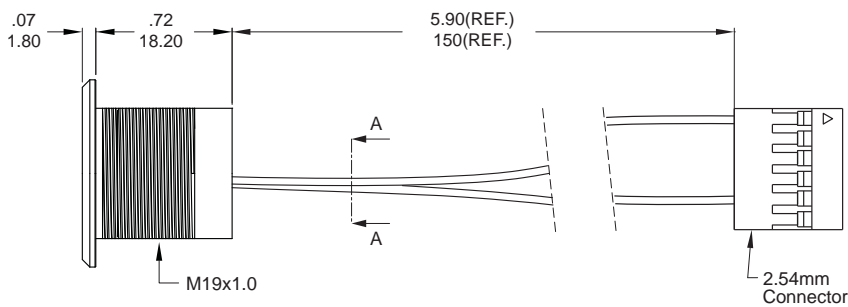


Wire: Brown

Part No. Shown : TZ16N-B4-C1HN00-00D301

SECTION A-A

**M** Concave, Without led



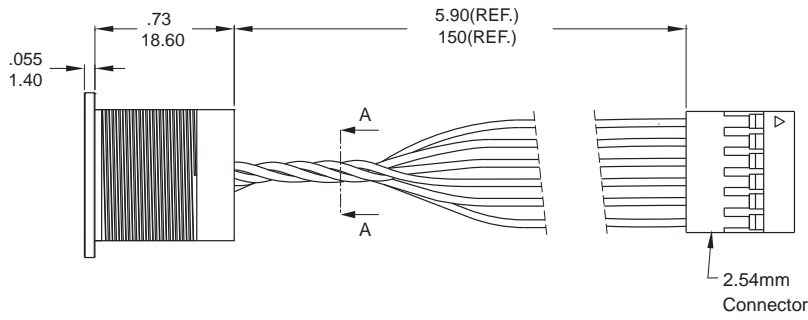
Wire: Brown

Part No. Shown : TZ19N-B4-F1MN00-00D101

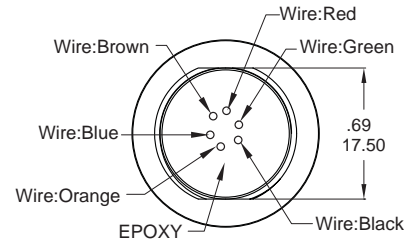
SECTION A-A

**WIRE**

**F** Flat,Illuminated ring

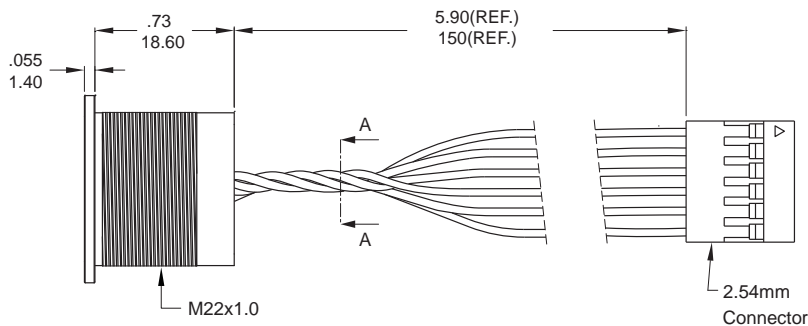


Part No. Shown : TZ19N-B4-F1FE00-3CD101

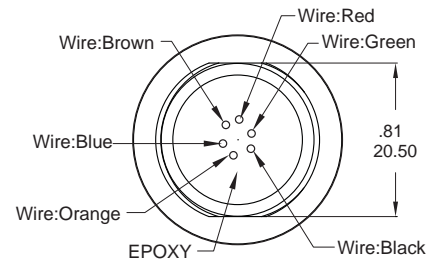


SECTION A-A

**F** Flat,Illuminated ring

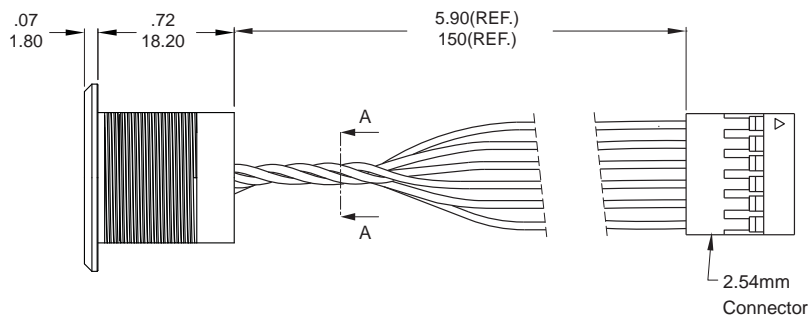


Part No. Shown : TZ22N-B4-F1FE00-3CD101

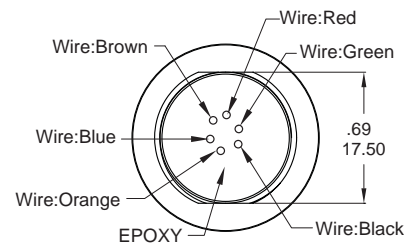


SECTION A-A

**M** Concave,Illuminated ring

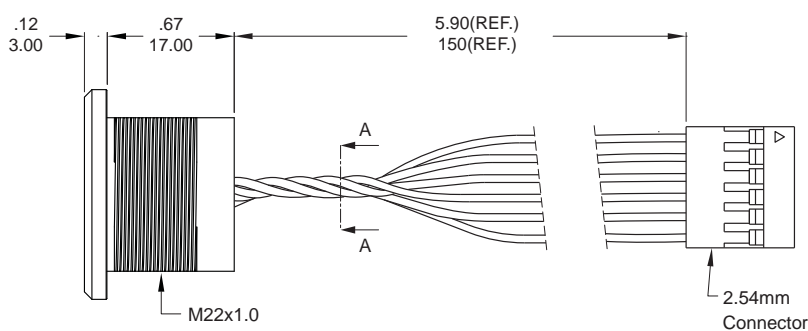


Part No. Shown : TZ19N-B4-F1ME00-3CD101

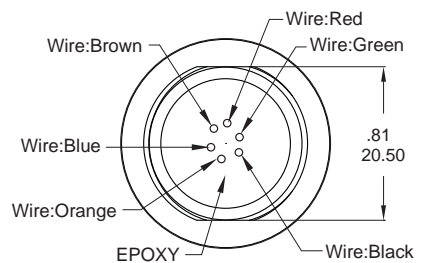


SECTION A-A

**M** Concave,Illuminated ring



Part No. Shown : TZ22N-B4-F1ME00-3CD101



SECTION A-A



TZ  
Piezo switches