



WINSTAR Display Co.,Ltd.

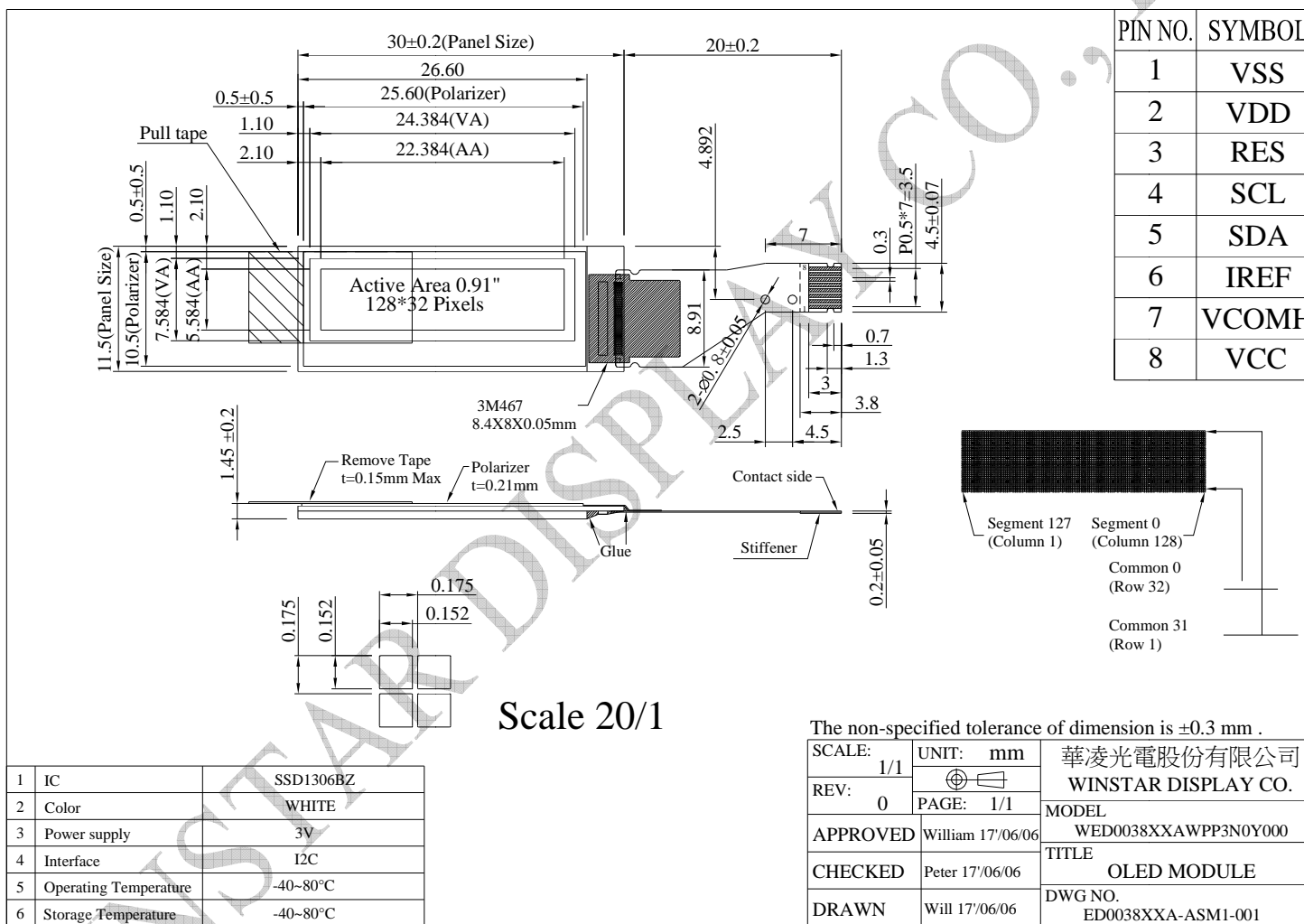
SPECIFICATIONS FOR PMOLED MODULE

MODEL	WEO012832D-1-W
--------------	-----------------------

General Specification

Item	Dimension	Unit
Dot Matrix	128 x 32	Dots
Module dimension	30.0x 11.5 x 1.45	mm
Active Area	22.384 x 5.584	mm
Pixel Size	0.152 x 0.152	mm
Pixel Pitch	0.175 x 0.175	mm
Display Mode	Passive Matrix	
Display Color	White	
Interface	I2C	
Drive Duty	1/32 Duty	
IC	SSD1306BZ	

Contour Drawing & Block Diagram



Interface Pin Function

No.	Symbol	Function
1	VSS	<i>Ground of Logic Circuit</i> This is a ground pin. It acts as a reference for the logic pins. It must be connected to external ground.
2	VDD	<i>Power Supply for Logic</i> This is a voltage supply pin. It must be connected to external source.
3	RES#	<i>Power Reset for Controller and Driver</i> This pin is reset signal input. When the pin is low, initialization of the chip is executed.
4	SCL	I2C-bus clock signal
5	SDA	I2C-bus data signal
6	IREF	<i>Current Reference for Brightness Adjustment</i> This pin is segment current reference pin. A resistor should be connected between this pin and VSS. Set the current lower than 12.5 μ A.
7	VCOMH	<i>Voltage Output High Level for COM Signal</i> This pin is the input pin for the voltage output high level for COM signals. A capacitor should be connected between this pin and VSS.
8	VCC	<i>Power Supply for OEL Panel</i> This is the most positive voltage supply pin of the chip. A stabilization capacitor should be connected between this pin and VSS when the converter is used. It must be connected to external source when the converter is not used.

TITLE: SPECIFICATIONS FOR PMOLED MODULE

REVISION DATE: 17-06-08

MEMO: 1.91" of PMOLED

Rev: 00

PAGE: 4 of 4

Absolute Maximum Ratings

Unless otherwise specified, VSS= 0V

(Ta = 25°C)

Parameter	Symbol	Min.	Typ.	Max.	Unit
Supply Voltage for Logic	VDD	0		4	V
Supply Voltage for Display	VCC	0	-	15	V
Operating Temperature	TOP	-40	-	+80	°C
Storage Temperature	TSTG	-40	-	+80	°C

Electrical Characteristics

DC Characteristics

Unless otherwise specified, VSS = 0V , VDD = 2.8 - 3.3V

(Ta = 25°C)

Items		Symbol	Condition	Min.	Typ.	Max.	Unit
Supply Voltage	Logic	VDD	-	2.8	3	3.3	V
	Operating	VCC	-	6.75	7.25	7.75	V
Input Voltage	High Voltage	V _{IH}	-	0.8×VDD	—	VDDIO	V
	Low Voltage	V _{IL}	-	0	—	0.2×VDD	V
Output Voltage	High Voltage	V _{OH}	-	0.9×VDD	—	VDDIO	V
	Low Voltage	V _{OL}	-	0	—	0.1×VDD	V

Symbol	Parameter	Min.	Typ.	Max.	Unit	Condition
ICC	VCC Supply Current	6.0	8.0	10.0	mA	VDD=3V , VCC=7.25V , Display 50% ON