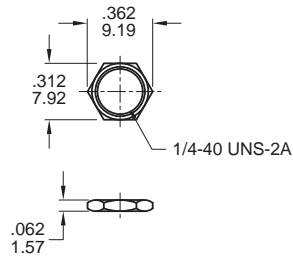


Additional Hardware Information

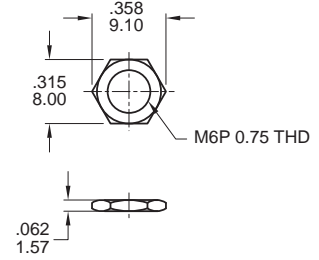
※Need to check stocks available

NUT

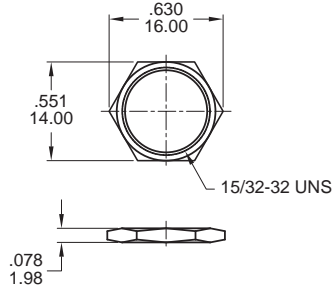
MNU-1M01A



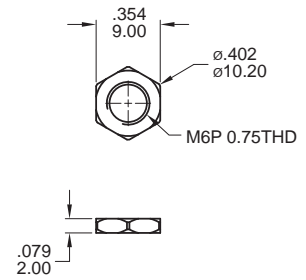
MNU-1M04



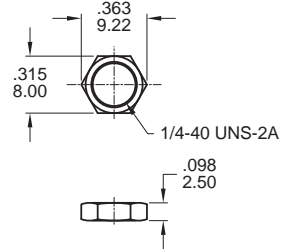
MNU-1M07



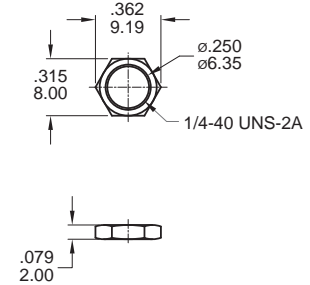
MNU-1M41



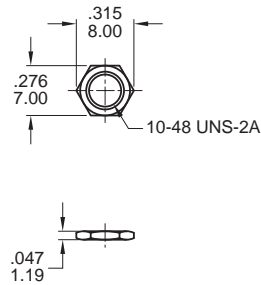
MNU-1M17



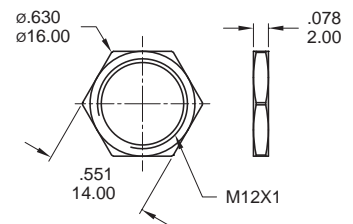
MNU-7M01



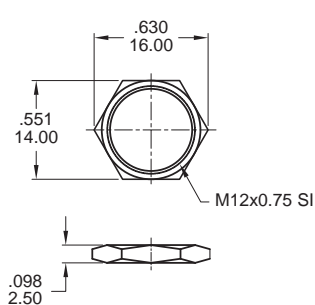
MNU-2M01



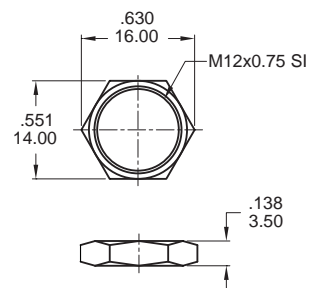
MNU-1M42



MNU-PA03



MNU-PA04



Additional
Hardware Information

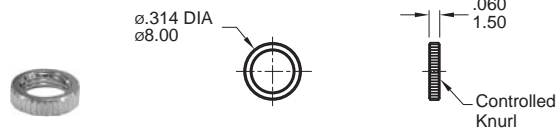
Additional Hardware Information

※ Need to check stocks available

DRESS NUTS

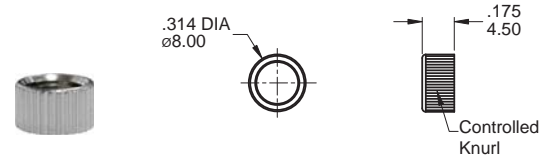
MNU-1M18

1/4-40 UNS-2A



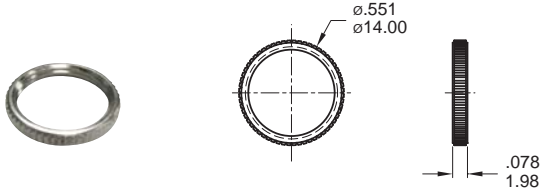
MNU-1M24

1/4-40 UNS-2A



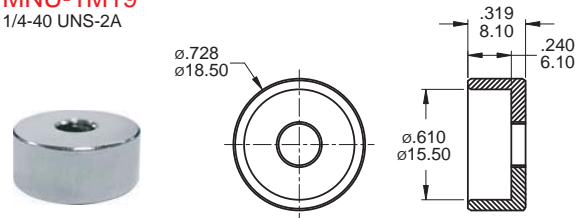
MNU-1M52

15/32-32 UNS-2A



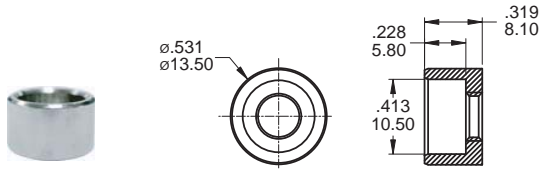
MNU-1M19

1/4-40 UNS-2A



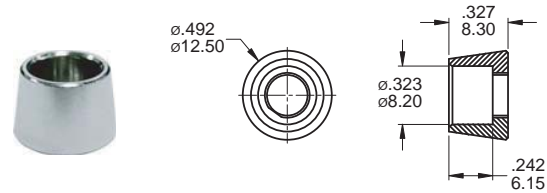
MNU-1M20

1/4-40 UNS-2A



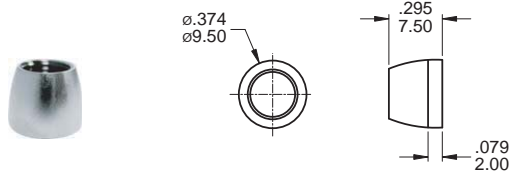
MNU-1M21

1/4-40 UNS-2A



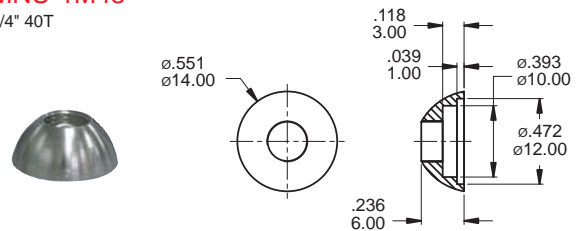
MNU-1M32

1/4-40 UNS-2A



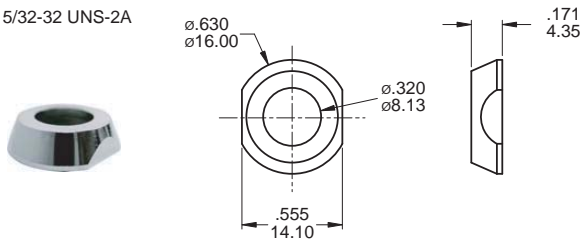
MNU-1M48

1/4" 40T



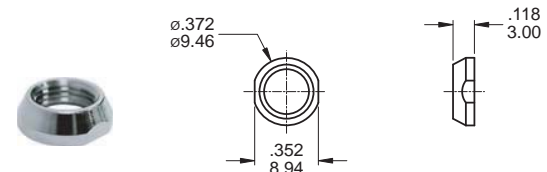
MNU-1M16

15/32-32 UNS-2A



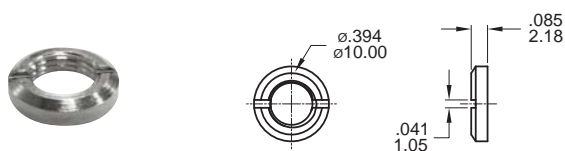
MNU-1M29

1/4-40 UNS-2A



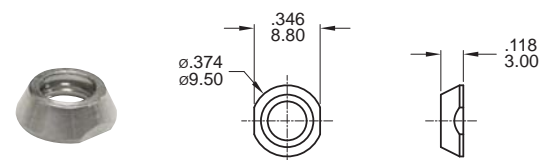
MNU-1M45

1/4-40 UNS-2A



MNU-1M47

M6x0.75 THD



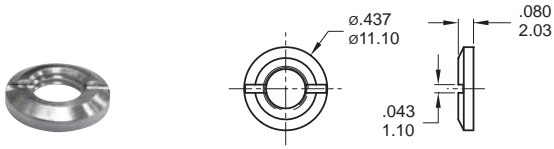
Additional
Hardware Information

Additional Hardware Information

※Need to check stocks available

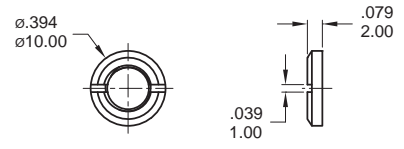
MNU-1M50

M6x0.75 THD



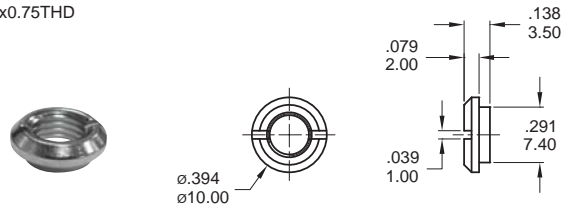
MNU-1M53

M6x0.75 THD



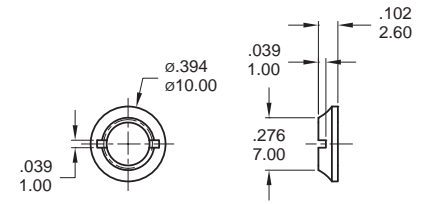
MNU-1M56

M6x0.75THD



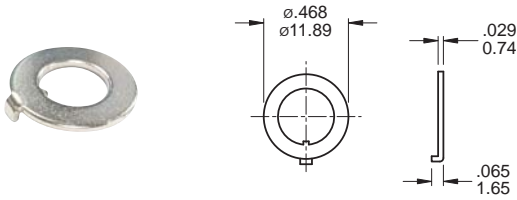
MNU-1M57

1/4-40 UNS-2A

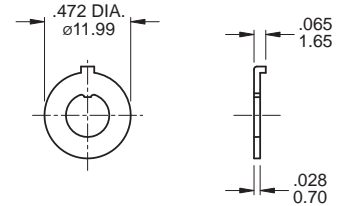


LOCKING RINGS

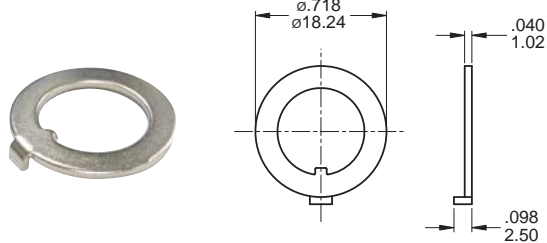
MNU-1M02



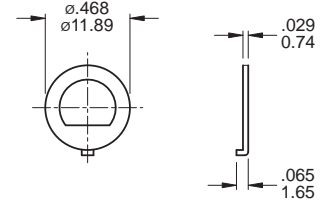
MNU-1M05



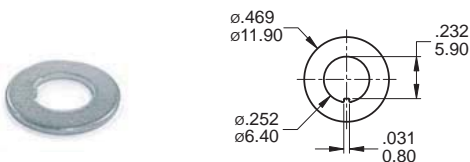
MNU-1M08



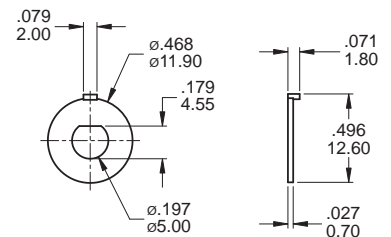
MNU-1M11



MNU-1M02P



MNU-2M0B

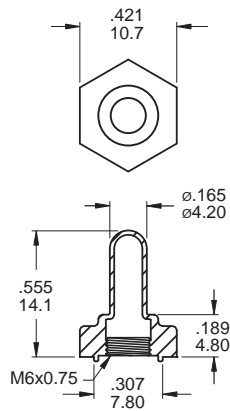


Additional Hardware Information

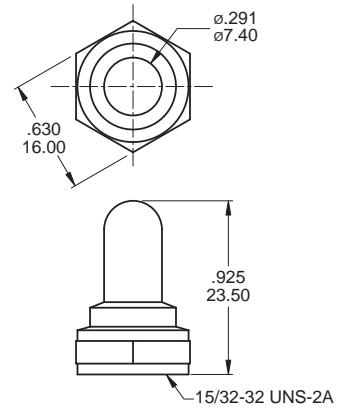
※Need to check stocks available

RUBBER - HOOD

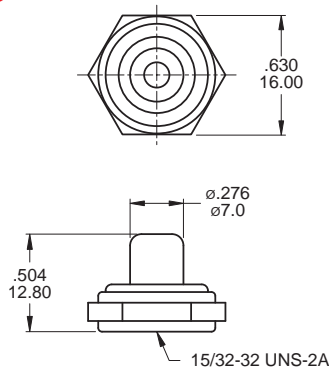
PU2-ET-102



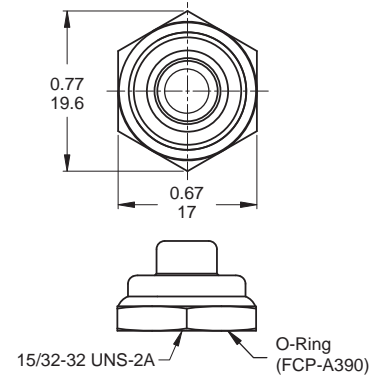
PU2-WB-A7A



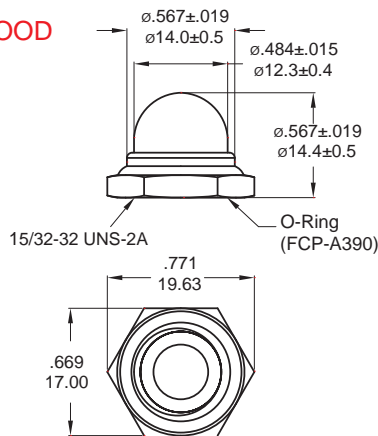
PG1-RUBBER-HOOD



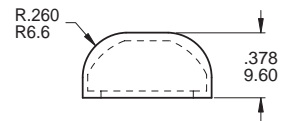
PG2A-RUBBER-HOOD



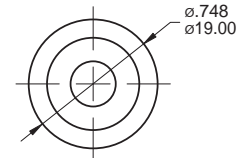
PG3A-RUBBER-HOOD



FCP-P003-2
(Black cap)



FCP-P003
(Transparent cap)



※ Supplied with PA series

PF2-RUBBER-HOOD

*Si-20°

