

# TS Series

Illuminated Tact Switches



## General Specifications

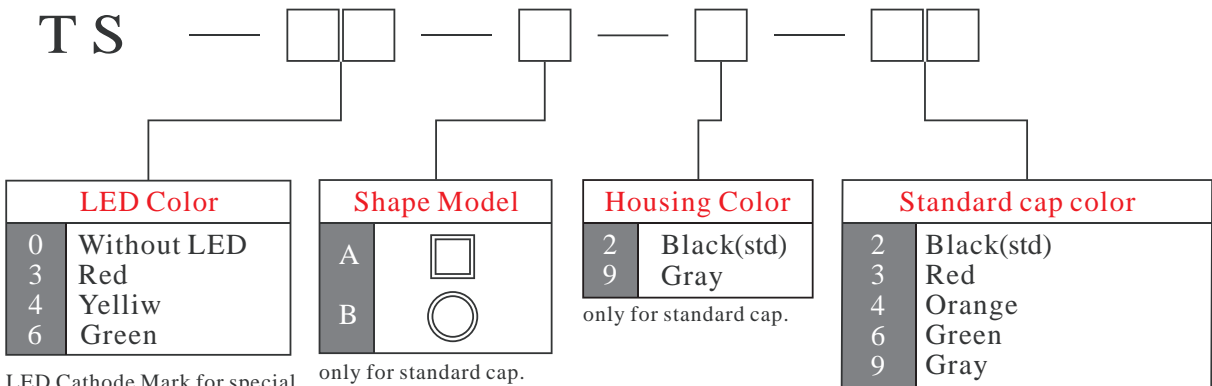
Circuit	:SPST
Current Rating	:50mA
Voltage Rating	:12VDC
Dielectric Withstanding Voltage	:250VAC for 1 minute
Contact Resistance	:100m Ohm Max.(initial)
Insulation Resistance	:100M Ohm Min.
Operating Force	:200gf+50gf
Total Travel	:0.25mm+0.2mm
Operating Life	:100,000 cycles Min.
Solder Specifications	:260 deg. for 3 seconds
Function	:Momentary
Operating Temperature	:-10 deg.~+60 deg.

## Materials

Cap	:Acrylonitrile Butadine Styrene (ABS)
A4 type cap	:Polycarbonate (PC)
Housing	:Polyamide (PA)
Stem	:Polybutylene terephthalate (PBT)
Base	:Polyamide(PA)
Terminal	:Brass with silver plating
Action Dome	:SUS 301 with gold plating

## HOW TO ORDER

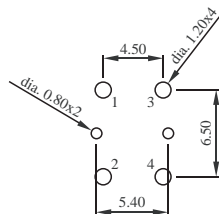
TS



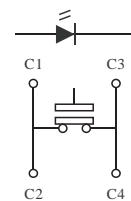
EXAMPLE : TS-3-A-2-3

Illuminated tact switch-Red led-"A" Housing -Black housing - Red cap

## PCB Mounting Holes & Circuit Diagram

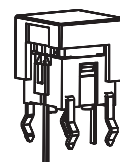
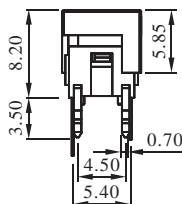
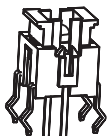
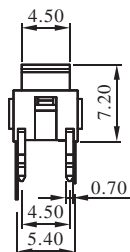
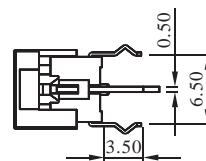
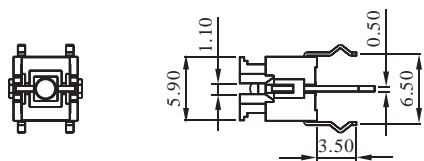


P.C.B. Mounting Holes



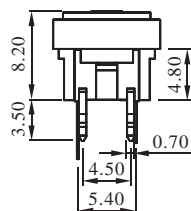
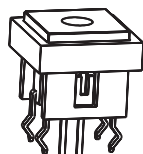
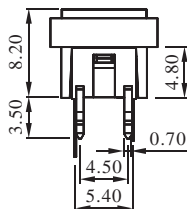
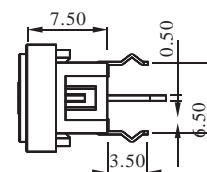
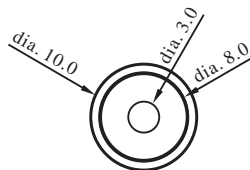
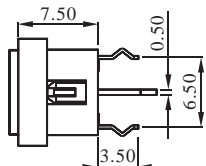
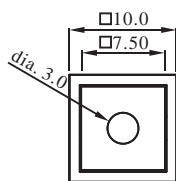
Circuit Diagram

**DIMENSION**



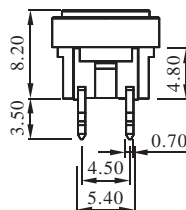
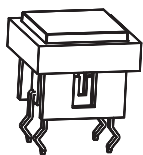
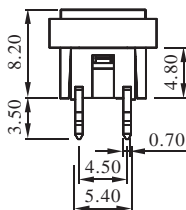
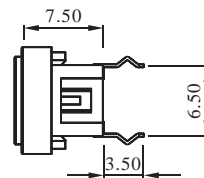
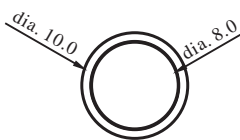
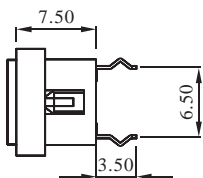
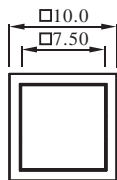
without housing and cap

without housing, "A4" type cap



with "A" housing, LED

with "B" housing, LED

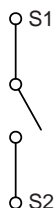
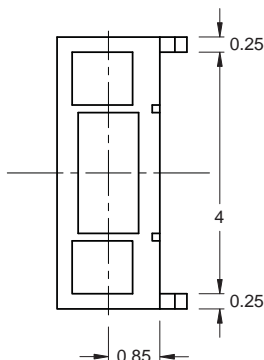
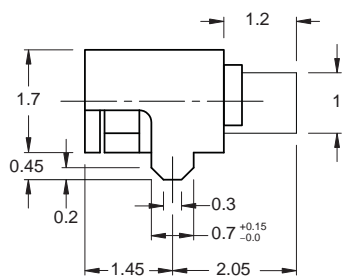
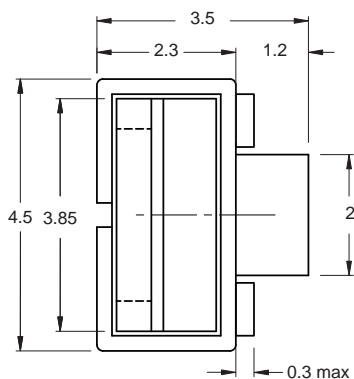


with "A" housing, not LED

with "B" housing, not LED



**TS104A2ME-035WBR-R**



**CIRCUIT DIAGRAM**

## SPECIFICATIONS

**SWITCH ACTION:** PUSH-ON type S.P.S.T

**RATING:** DC 12V,20mA Max.

**CLRCUIT:** 1C-1P

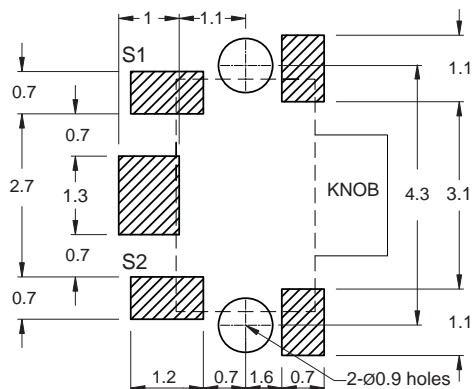
**CONTACT RESISTANCE:** 100 mΩ max.

**OPERATING FORCE:** 160 ± 50gf

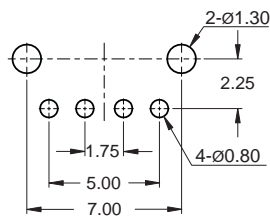
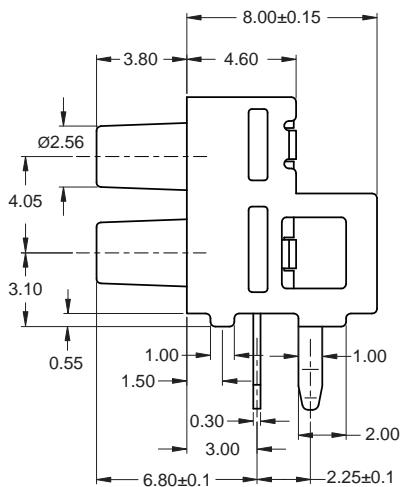
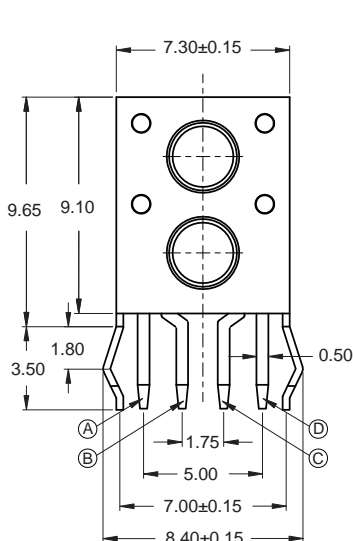
**OPERATION LIFE:** 100,000 cycles min.

**OPERATION TEMPERATURE RANGE:** -30°C~+80°C

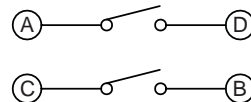
**P.C.B Mounting  
Pattern Dimension**



**TS800AH-068BR-B**  
6.0x8.0x8.3H Through Hole



**P.C.B LAND DIMENSION**



**CIRCUIT DIAGRAM**

## SPECIFICATIONS

**RATING:** DC 12V 50mA

**TRAVEL:** 0.25 +0.2/-0.1 mm

**CONTACT RESISTANCE:** 100 mΩ MAX.

**GENERAL TOLERANCE:** ± 0.2mm

**OPERATION LIFE:** 100,000 cycles min.

**OPERATION TEMPERATURE RANGE:** -20°C~+70°C

**CONTACT ARRANGEMENT:** 1 poles 1 throws

**Manufacturing specification would be accordance with WT0158**





## SPECIFICATIONS

**RATING:** DC 12V 50mA

**CONTACT RESISTANCE:** 100 mΩ MAX.

**CONTACT ARRANGEMENT:** 1 poles 1 throws

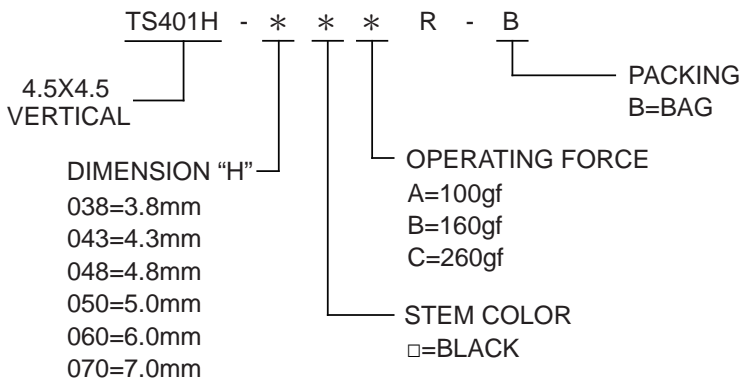
**TRAVEL:** 0.20±0.10 mm

**ACTUATING FORCE:** 100±50 gf  
160±50 gf  
260±80 gf

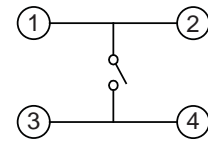
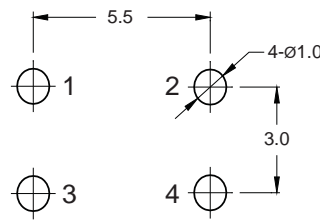
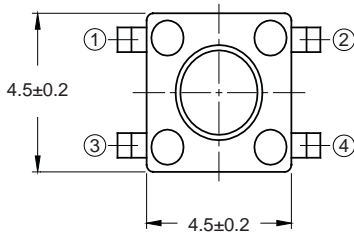
**OPERATING TEMPERATURE RANG:** -20°C to +70°C

**Manufacturing specification would be accordance with WT0158**

## PART NO.(P/N.)



TS401VH-070xR-B	7.0 mm
TS401VH-060xR-B	6.0 mm
TS401VH-050xR-B	5.0 mm
TS401VH-048xR-B	4.8 mm
TS401VH-043xR-B	4.3 mm
TS401VH-038xR-B	3.8 mm
<b>MODEL NO.</b>	<b>"H"</b>



P.C.B LAND DIMENSION

CIRCUIT DIAGRAM

