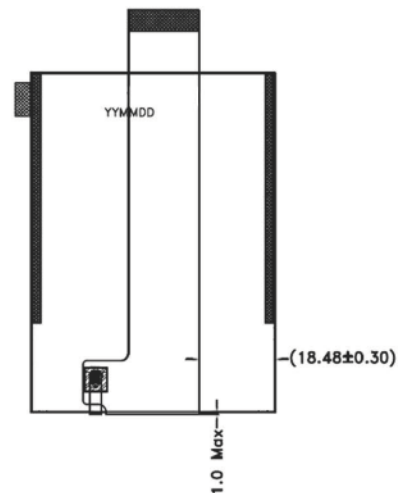
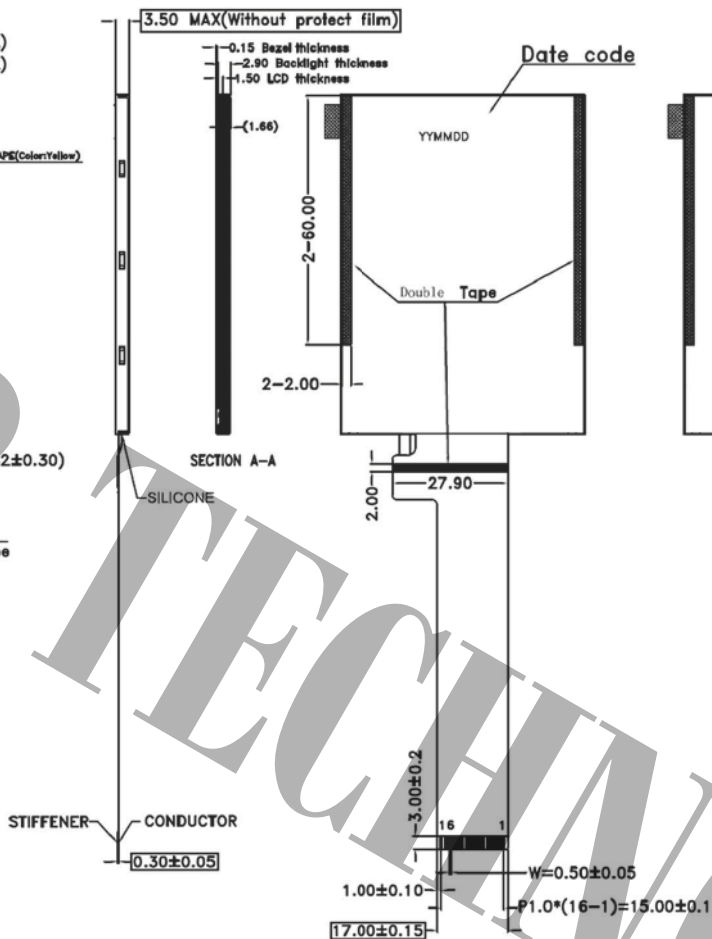
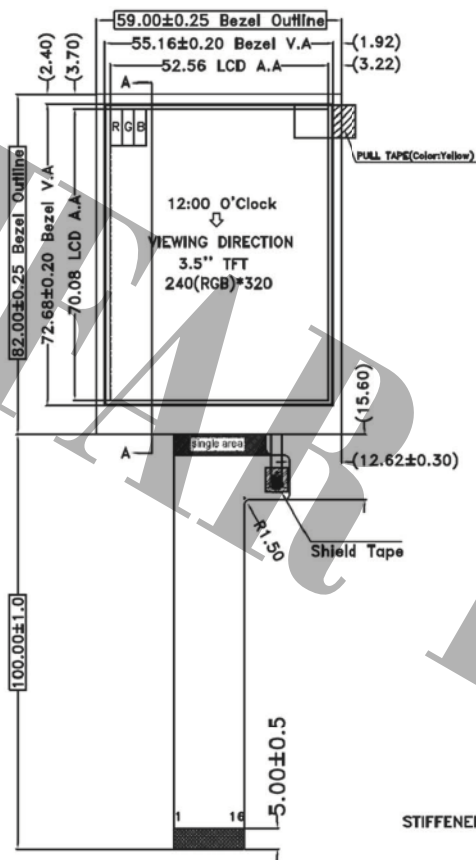


RoHS

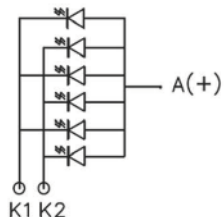


PIN	SYMBOL
1	VDD
2	VDDI
3	TE
4	IM3
5	RES
6	CS
7	SDA
8	SDO
9	SCL
10	WRX
11	VSS
12	LED-A
13	LED-K1
14	LED-K2
15	NC
16	NC

Specification

- LCD type: a-Si TFT, Normally White, TN mode, Positive / Transmissive
- Driver IC: ST7789VI, VDD:3.3V
- View direction: 12 O'Clock(for best image quality),6 O'Clock(Gray inversion)
- Operating temp:-20°C~70°C, Storage temp: -30°C~80°C
- Luminance(cd/m²): 400(Min.) 6PCS White LED, Vf:3.3V; If:90~120mA
- Chromaticity Coordinates:X(w)0.27~0.37 / Y(w)0.295~0.395
- The tolerance unless classified ±0.30mm
- Remark:ROHS

電路圖 **CIRCUIT DIAGRAM (LED 1*6=6 dies)**



NOTE:
1.(.):REFERENCE DIMENSION.
2.□:IMPORTANT DIMENSION.



SCALE:100:1

日期 版本 修改內容



晶發科技股份有限公司
GI FAR TECHNOLOGY CO., LTD.

DATE 2017.12.21 REV 00 DRAWING NO.:

UNIT : mm
SCALE : 1 / 1

Product : GFTO035BA240320

DRAWN: Hazel CHECKED: Sidney

PAGE: 1 / 1