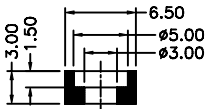
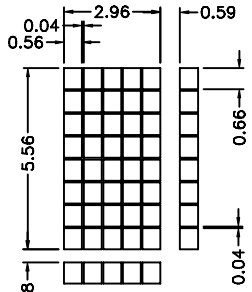


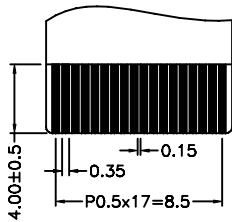
REV	Description	Date
A00	First Issue	2007-MAY-10



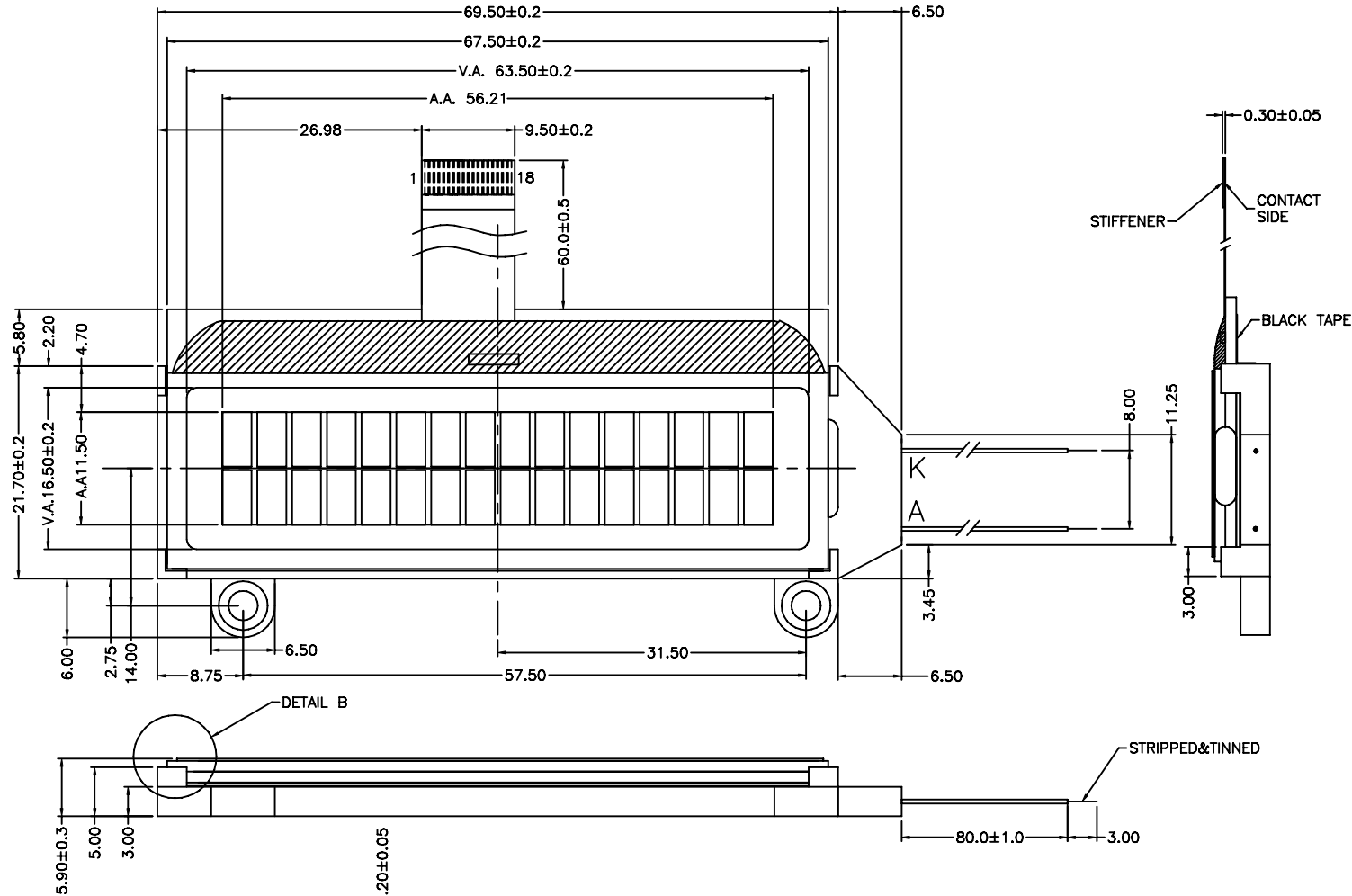
SECTION A-A



DOT DETAILS



FPC CONTACT SIDE DETAILS

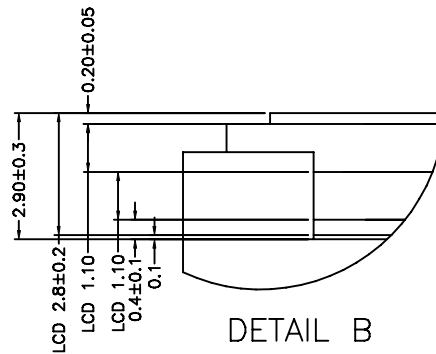


PIN ASSIGNMENT:

1	XRESET
2	RS
3	CSB
4	RW
5	E
6	DB0
7	DB1
8	DB2
9	DB3
10	DB4
11	DB5
12	DB6
13	DB7
14	VSS
15	SHLC
16	SHLS
17	VDD
18	V0
A	LED+
K	LED-

SPECIFICATIONS:

- 1) STN/-VE/BLUE/TRANSMISSIVE MODE
- 2) 1/16 DUTY, 1/5 BIAS, VLCD=4.8V
- 3) VIEWING ANGLE=12 O'CLOCK
- 4) OP.TEMP.=0 °C TO °C+50
ST.TEMP.= -20 °C TO °C+70
- 5) WITH WHITE LED BACKLIGHT, 3.6V@15mA



DETAIL B

Description: **MECHANICAL SPECIFICATIONS**

Scale:

Sheet : 1 of 1

Unspecified Tol. ±0.3

Unit mm

Approvals

Date

Draw:

Check:

Approve:



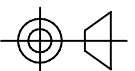
TRI-T COMPANY LIMITED

Project Number

Item Number

TMGC16265B-17

Do Not Scale This Drawing



Projection