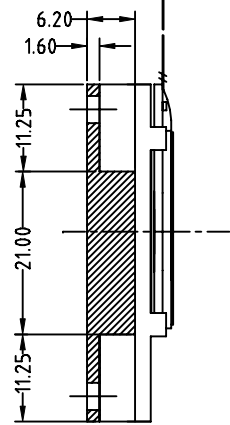
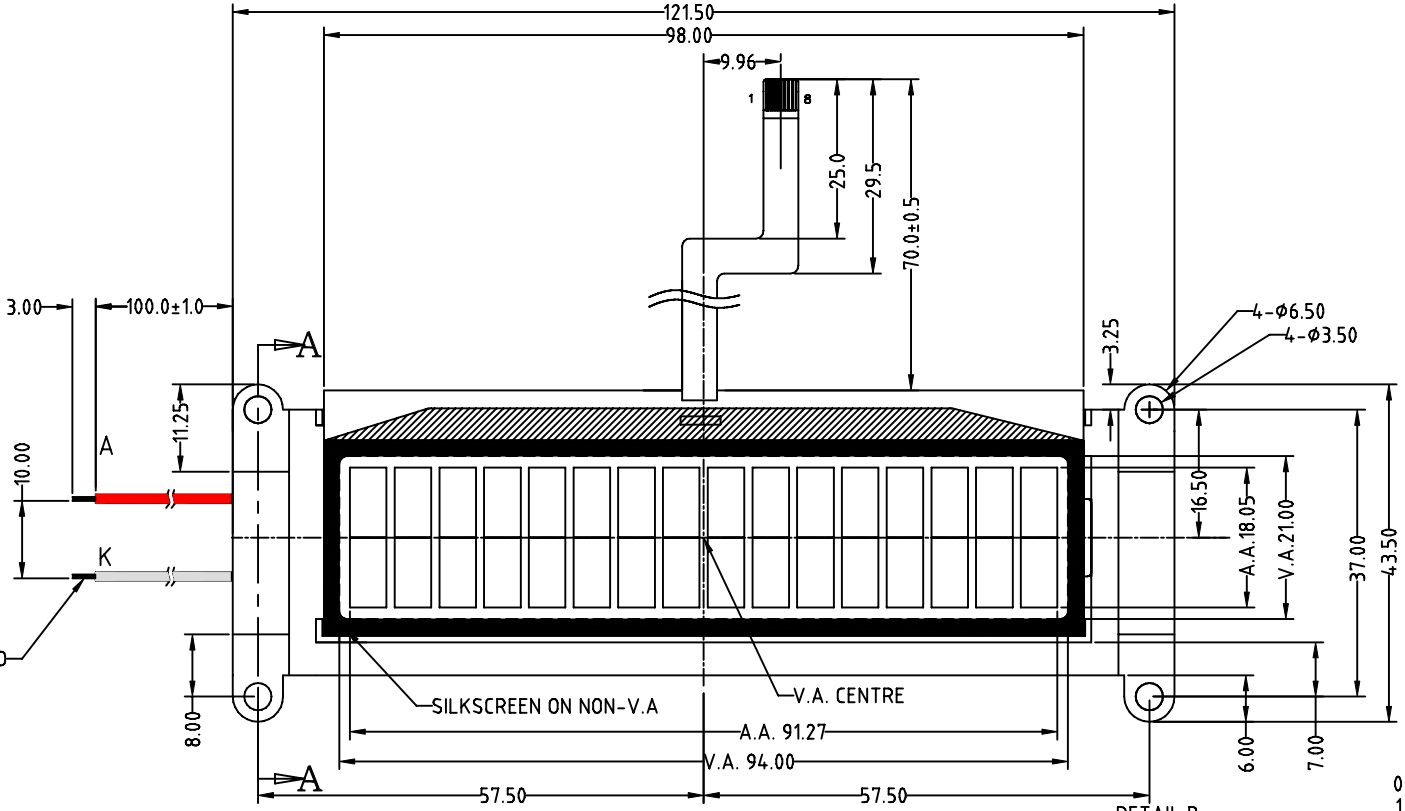


REV	Description	Date
A00	First Issue	2007-AUG-13

CONTACT SIDE  
STIFFENER

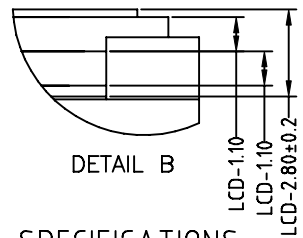


SECTION A-A

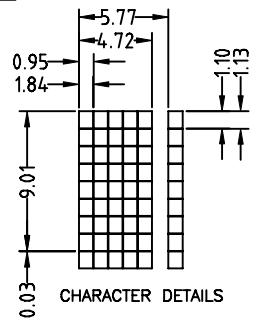


PIN ASSIGNMENT:

1	XRESET
2	SCL
3	SDA
4	VSS
5	VDD
6	CAP1P
7	CAP1N
8	VOUT
A	LED+
K	LED-

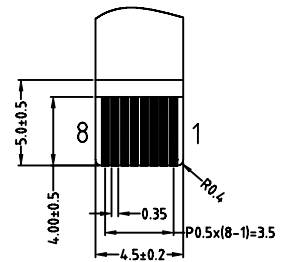


DETAIL B


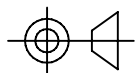


CHARACTER DETAILS

- SPECIFICATIONS:
- 1) STN/-VE/BLUE/TRANSMISSIVE MODE
  - 2) 1/17 DUTY, 1/5 BIAS,  $V_0 - V_{SS} = 4.8V$
  - 3) VIEWING ANGLE=12 O'CLOCK
  - 4) OP.TEMP.=0 °C TO °C+50  
ST.TEMP.=-10 °C TO °C+60
  - 5) WITH WHITE LED BACKLIGHT, 3.6V@45mA
  - 6) LOGIC VOLTAGE, VDD=3.3V



FPC CONTACT SIDE DETAILS

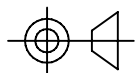
Description: <b>MECHANICAL SPECIFICATIONS</b>	
Scale:	 <b>TRI-T COMPANY LIMITED</b>
Sheet : 1 of 1	
Unspecified Tol. ±0.3	Unit mm
Approvals	Date
Draw:	Project Number
Check:	Item Number
Approve:	Do Not Scale This Drawing
 Projection	



**TRI-T COMPANY LIMITED**

Project Number  
TMGC16269D-03

Item Number



Projection