



# Contactless Touch Technology for a Better Tomorrow

Hyper-intuitive contactless touch technology for a superior customer experience.

Neonode has been transforming the way humans interact with machines for decades. Today, Fortune 500 companies use our technology to enhance customer experience, and it can be found in over 80 million products worldwide. We also hold over 100 patents and have been listed on Nasdaq since 2012. But it's not just about world-class products. We also provide best-in-class support so you can give your customers a better, safer experience as fast as possible.



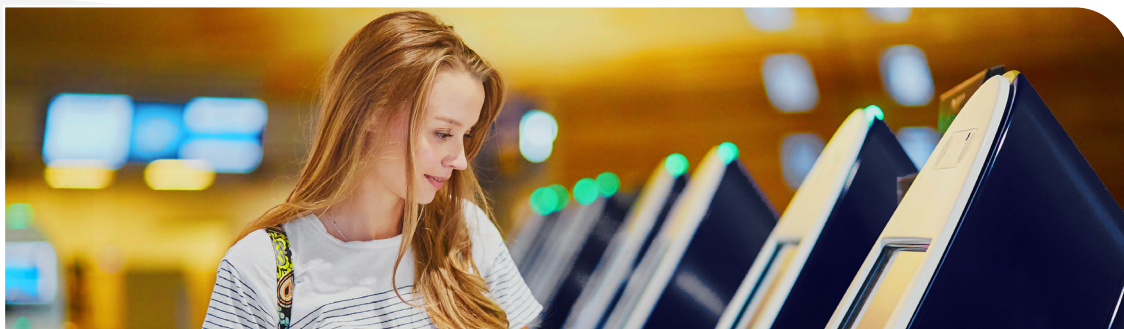
Neonode Touch Sensor Modules can make any surface contactless

- *Elevators*
- *Self-Service Kiosks*
- *Coffee Machines*
- *Restaurant Menus*
- *Digital Signage*
- *POS Systems*
- *ATMs*
- *Vending Machines*

## Zero Touch Technology with Pinpoint Accuracy

With Neonode technology, you can make anything from coffee machines to elevators fully touchless in moments. Using infrared lasers with a configurable scanning frequency of up to 900Hz, our Touch Sensor Modules track movement with 1.5mm accuracy and a response time as fast as 10 milliseconds.

Our light-reflective technology allows users to make multi-touch interactions with anything they choose, whether it be fingers, gloves or pens. In-built self-calibration also ensures touches from unwanted objects are ignored, such as passersby, water droplets or insects. Users can swipe, scroll, pinch, push and sign their name without touching anything - making your customers feel prioritized, and safe.





## Revolutionize with Retrofit or New Design - The Choice is Yours

Neonode Touch Sensor Modules can be used in two ways: by mounting a sensing field parallel to your existing control panel or touchscreen to make it a contactless experience - or make a projected holographic image completely interactive.

Our Touch Sensor Modules, which are easily connected by using USB HID or I2C, can be retrofitted for fast application, or integrate them into new innovative designs. Both are germ-free, low maintenance, work outdoors - and add a little wow factor. The best part? They're more cost-effective than you'd think.



### Neonode Touch Sensor Modules offer full flexibility

- Works seamlessly with existing user interfaces for instant plug-&-play
- Integrates easily with facial recognition and voice technologies
- Suitable for rugged and outdoor applications

## Plug-&-Play with Parallel Plane

A single ultra-slim module that can be fitted onto any screen or surface to make it touchless in minutes, without modifying the UI.

The modules work as touch HID devices over USB or I2C, giving you a fast plug-and-play experience. When connecting it to your system, it will immediately be recognized as a HID touchscreen digitizer and initiate a touch interaction area when hovering above the display or surface. You can also apply a new set of configurations by simply sending a configuration message to the sensor module. These settings change how the module handles touch input data, making it possible to mount the sensor module alongside any side of a display, regardless of orientation.



## Holographic Technology

Revolutionary holographic technology can create in-air projections of your user interface for a real wow factor. Couple this with our Touch Sensor modules and you can create fully interactive in-air holograms that can be pushed, swiped, spun and even written on.

Holographic technology uses mirrored projection plates positioned at specific angles to redirect light emanating from ordinary LCD displays and concentrate it into a position equal distance from the plate, creating a floating image. The plate also reduces the viewing angle of the projected image compared to the original display, enabling users to maintain privacy.

